



The company is committed to the R&D, production and sales of different wire mesh products, including Industrial Wire Mesh, Architectural Wire Mesh, Petrochemical Wire Mesh, Fencing, Decorative Wire Mesh, Conveyor Belt, etc. After years of research and development, there appears an endless stream of innovation for our products.

## Cable tray

We designs and manufactures cable tray systems, including perforated tray, cable ladder, channel tray and strut (metal framing), Combining local manufacture and distribution with an extensive product range, these facilities ensure we can effectively support customer demand and respond rapidly to project timelines for all types of installation across regions. So, whether specifying a major new project, or simply refurbishing existing facilities, choose our cable tray to deliver the most effective, reliable and long lasting support for your cabling needs.

## Main benefits

### **Extensive product range**

- Available in aluminium or steel
- Medium duty to ultra heavy duty, to cover all types of installation.
- Extensive selection of fittings, covers and accessories

**Reliable:** Cable tray systems open design eliminates moisture buildup and reduces damage to cable insulation during installation.

**Adaptable:** As new technologies develop or new needs arise, count on full adaptability from a cable tray system because cables can enter or exit at any point.

**Maintain with ease:** Because cable tray systems are easy to inspect, maintenance requires less time, and there is less susceptibility to fire loss.

### **wire mesh basket trays**

wire mesh basket trays are a budget-friendly alternative to other cable management solutions for supporting groups of cables. WireRun Cable Trays can be installed either in a ceiling, in a raised floor or along a wall with brackets, and are easily altered to make turns to complete to path.



HEBEI JIKE TRADE CO.,LTD

ZHONGKE INDUSTRIAL PRODUCTS CO.,LTD

ADD:BAONENG CENTER,SHIJIAZHUANG,HEBEI,CHINA 050800

TEL/WECHAT/WHATSAPP:+86-15831931141 +86-19930751141

Email: [janeliu@qualitywiremesh.com](mailto:janeliu@qualitywiremesh.com) Web: [www.qualitywiremesh.com](http://www.qualitywiremesh.com)

- Tray grids are made of galvanized steel to resist corrosion and still be trimmed to size with steel cutters
- Single bars can be cut off to make either make drops or turns, or to join with other trays of different widths
- Trays can be suspended either in the ceiling, in a raised floor, or mounted along walls with optional kits or brackets
- Open design suspends electrical and network cables from support beams or routes them above drop ceiling systems, but still allows for additions or changes in the future
- Ventilating grid pattern allows for air circulation and also prevents dust, debris and other contaminants from becoming trapped inside the tray
- Electro zinc-plated galvanized steel helps prevent corrosion from chemicals or humidity





HEBEI JIKE TRADE CO.,LTD

ZHONGKE INDUSTRIAL PRODUCTS CO.,LTD

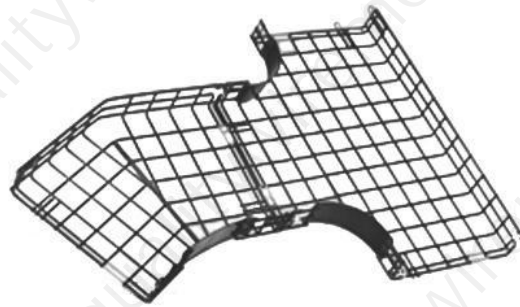
ADD:BAONENG CENTER,SHIJIAZHUANG,HEBEI,CHINA 050800

TEL/WECHAT/WHATSAPP:+86-15831931141 +86-19930751141

Email: [janeliu@qualitywiremesh.com](mailto:janeliu@qualitywiremesh.com) Web: [www.qualitywiremesh.com](http://www.qualitywiremesh.com)

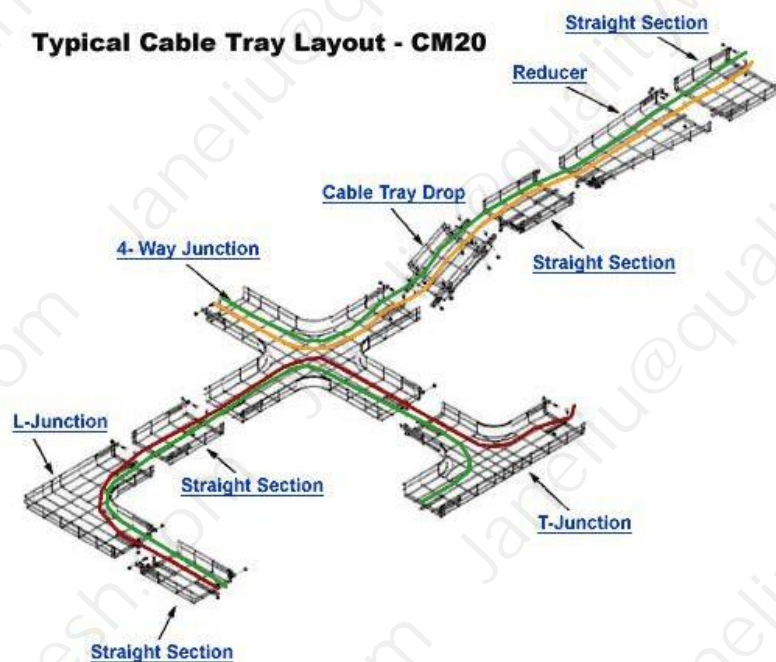
## QuickTurn Basket Tray

QuickTurn™ prefab fittings save time and money. Cutting fittings for your basket tray installation is labor-intensive and time-consuming. It can also undermine proper grounding. That's why, in addition to straights, QuickTurn system features a full array of factory-made fittings for turns, T's and elevation changes. QuickTurn eliminates on-site fabrication and grounding worries, allowing you to install fittings up to 80% faster. And that can make it easier for you to turn a



profit.

**Typical Cable Tray Layout - CM20**





HEBEI JIKE TRADE CO.,LTD

ZHONGKE INDUSTRIAL PRODUCTS CO.,LTD

ADD:BAONENG CENTER,SHIJIAZHUANG,HEBEI,CHINA 050800

TEL/WECHAT/WHATSAPP:+86-15831931141 +86-19930751141

Email: [janeliu@qualitywiremesh.com](mailto:janeliu@qualitywiremesh.com) Web: [www.qualitywiremesh.com](http://www.qualitywiremesh.com)

### **Fittings made simple.**

QuickTurn™ factory-made straights and fittings make installation and cable running easier.

- One-tool installation—simplifies the entire process
- A fitting for every need—streamlines work flow and materials handling
- No cutting—eliminates waste
- Low-resistance corner plates—makes pulling cables fast

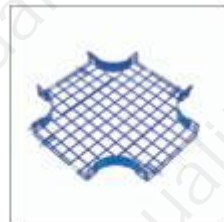
**Safety built right in.** QuickTurn™'s integrated grounding loops ensure that proper grounding connections are made every time.

**Durability inside and out.** Its high-strength basket design provides structural integrity. And its special post-fabrication powder coat protects all welds from the elements.

**A turn for the better.** Where do you want to go? QuickTurn™ can take you there, providing a higher level of versatility and control.



Straight  
Sections



Fittings



Accessories

### **Perforated Cable Tray**

We offer a wide range of perforated cable trays which are fabricated using quality raw material such as GI aluminium. These perforated cable trays are offered in different types, generally fabricated in mild steel. As per the client's requirements, we can customize our perforated cable tray range in following modes:

- Grey color enamel paint or powder coat
- Fabrication in pre - galvanized steel or hot dip galvanized

Every piece of our perforated cable tray has an average length of 2500 mm. As per the client requirements, we can also





HEBEI JIKE TRADE CO.,LTD

ZHONGKE INDUSTRIAL PRODUCTS CO.,LTD

ADD:BAONENG CENTER,SHIJIAZHUANG,HEBEI,CHINA 050800

TEL/WECHAT/WHATSAPP:+86-15831931141 +86-19930751141

Email: [janeliu@qualitywiremesh.com](mailto:janeliu@qualitywiremesh.com) Web: [www.qualitywiremesh.com](http://www.qualitywiremesh.com)

manufacture flanges of the tray. Moreover, we also develop various accessories for our range which are used for support & installation of cables over the cable trays. The accessories are mentioned below:

- Clamps
- Connecting Pieces
- Slotted Angles

**Features:**

- Corrosion Resistance
- Simple Usage
- Durability





HEBEI JIKE TRADE CO.,LTD

ZHONGKE INDUSTRIAL PRODUCTS CO.,LTD

ADD:BAONENG CENTER,SHIJIAZHUANG,HEBEI,CHINA 050800

TEL/WECHAT/WHATSAPP:+86-15831931141 +86-19930751141

Email: [janeliu@qualitywiremesh.com](mailto:janeliu@qualitywiremesh.com) Web: [www.qualitywiremesh.com](http://www.qualitywiremesh.com)

## Ladder Cable Tray

Cable trays provide a support system for managing cables in a Building or other places. Cable tray installation provide instant approach to maintain and replacement of cables without any difficulty. They give excellent ventilation and enhance life of cables.

Our company offers a precision engineered range of steel ladder cable trays which are renowned for their attributes such as strength and high capacity. Our range of steel ladder cable trays are manufactured using mild steel, stainless steel and aluminum which are in compliance to various international standards and specifications. Ladder type cable trays are ideal for heavy duty power distribution in industrial facilities.

### Features

- Corrosion Resistance
- Simple Usage
- Durability





HEBEI JIKE TRADE CO.,LTD

ZHONGKE INDUSTRIAL PRODUCTS CO.,LTD

ADD:BAONENG CENTER,SHIJIAZHUANG,HEBEI,CHINA 050800

TEL:WECHAT/WHATSAPP:+86-15831931141 +86-19930751141

Email: [janeliu@qualitywiremesh.com](mailto:janeliu@qualitywiremesh.com) Web: [www.qualitywiremesh.com](http://www.qualitywiremesh.com)

## Cable Tray Accessories And Support

We fabricate a wide range of cable tray accessories using quality raw material and advanced technology ensuring complete satisfaction at clients end. Our range of cable tray accessories are used along with a ladder-type cable tray that has a pair of parallel spaced apart rails that are interconnected by a plurality of rungs. Every plurality of hangers has a partly enclosed area which is configured & dimensioned to receive minimum 1 cable. Each plurality of hangers includes a support bracket which is integrally formed as an addition which ensures proper removable by attaching hanger to minimum 1 of the pairs of the spaced apart rails of ladder-type cable tray.

### Our cable tray accessories includes

- An elongate flexible spine member selectively bendable into a number of different configurations
- A plurality of spaced apart hangers attached to the elongate spine member along the length



### Accessories :





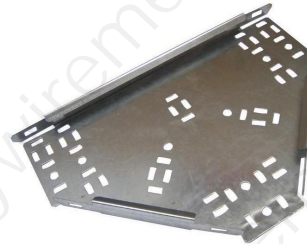
HEBEI JIKE TRADE CO.,LTD

ZHONGKE INDUSTRIAL PRODUCTS CO.,LTD

ADD:BAONENG CENTER,SHIJIAZHUANG,HEBEI,CHINA 050800

TEL/WECHAT/WHATSAPP:+86-15831931141 +86-19930751141

Email: [janeliu@qualitywiremesh.com](mailto:janeliu@qualitywiremesh.com) Web: [www.qualitywiremesh.com](http://www.qualitywiremesh.com)





产品名称：防火桥架上垂直三通

产品类别：槽式电缆桥架

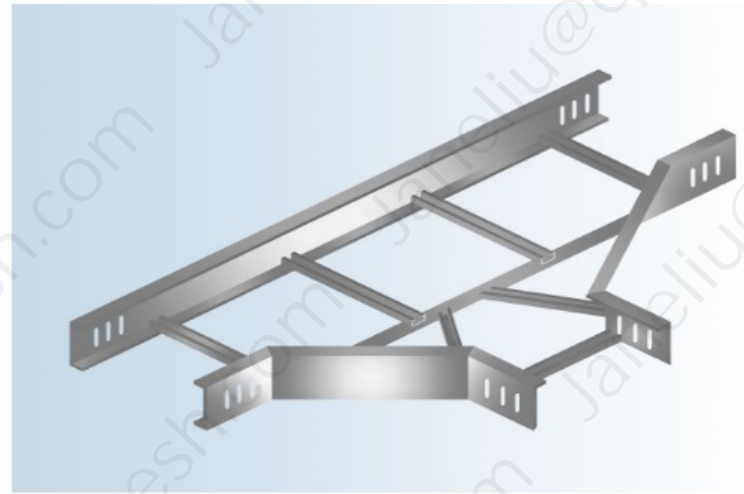
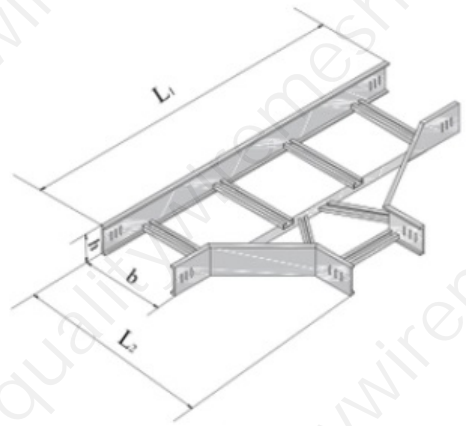
产品规格型号：

选型参数表

序号	型号	规格 mm				重量 kg/件	配用盖板	
		B	H	L <sub>1</sub>	L <sub>2</sub>		型号	重量 kg/件
1	C105-50×25	50	25	325	175	2.78	CG105-50	0.44
2	C105-50×50	50	50	350	200	3.77	CG105-50	0.48
3	C105-100×50	100	50	350	200	4.12	CG105-100	0.66
4	C105-150×50	150	50	490	270	5.9	CG105-150	0.75
5	C105-200×50	200	50	490	270	7.96	CG105-200	1.62
6	C105-150×75	150	75	515	295	6.76	CG105-150	0.75
7	C105-150×100	150	100	540	320	8.26	CG105-150	1.22
8	C105-200×100	200	100	540	320	10.52	CG105-200	1.85
9	C105-300×100	300	100	540	320	14.64	CG105-300	3.47
10	C105-400×100	400	100	540	320	20.59	CG105-400	5.86
11	C105-500×100	500	100	540	320	27.55	CG105-500	8.54
12	C105-600×100	600	100	540	320	30.56	CG105-600	10.12
13	C105-300×150	300	150	590	370	17.59	CG105-300	3.8
14	C105-400×150	400	150	590	370	23.93	CG105-400	6.32
15	C105-500×150	500	150	590	370	31.28	CG105-500	9.12
16	C105-600×150	600	150	590	370	24.28	CG105-600	10.79
17	C105-800×150	800	150	590	370	42.71	CG105-800	14.87



## 梯架式水平三通/JY-T104



产品编号: JY-T104

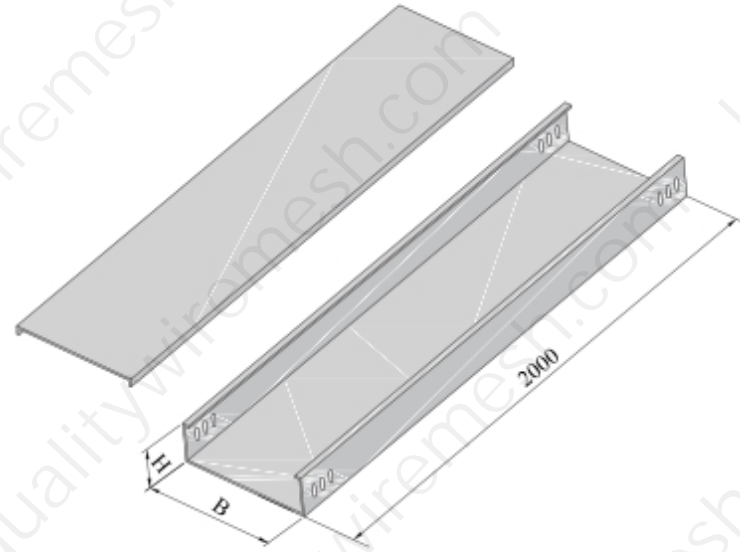
产品名称: 梯架式水平三通

产品类别: 梯架式电缆桥架

产品规格型号:

序号	型号	规格 mm				重量 kg/件	配用盖板	
		b	h	$L_1$	$L_2$		型号	重量 kg/件
1	T104-200×60	200	60	720	460	6.94	TG200	6.50
2	T104-200×100		100			8.16		
3	T104-200×150		150			13.60		
4	T104-300×60	300	60	820	560	8.94	TG300	8.59
5	T104-300×100		100			10.24		
6	T104-300×150		150			14.97		
7	T104-400×60	400	60	920	660	14.97	TG400	14.80
8	T104-400×100		100			16.62		
9	T104-400×150		150			21.73		
10	T104-500×60	500	60	1020	760	17.09	TG500	18.20
11	T104-500×100		100			19.24		
12	T104-500×150		150			24.48		
13	T104-600×60	600	60	1120	860	19.61	TG600	25.50
14	T104-600×100		100			21.86		
15	T104-600×150		150			27.23		
16	T104-800×60	800	60	1320	1060	24.46	TG800	32.10
17	T104-800×100		100			27.09		
18	T104-800×150		150			32.71		

## 槽式直通/JY-C101

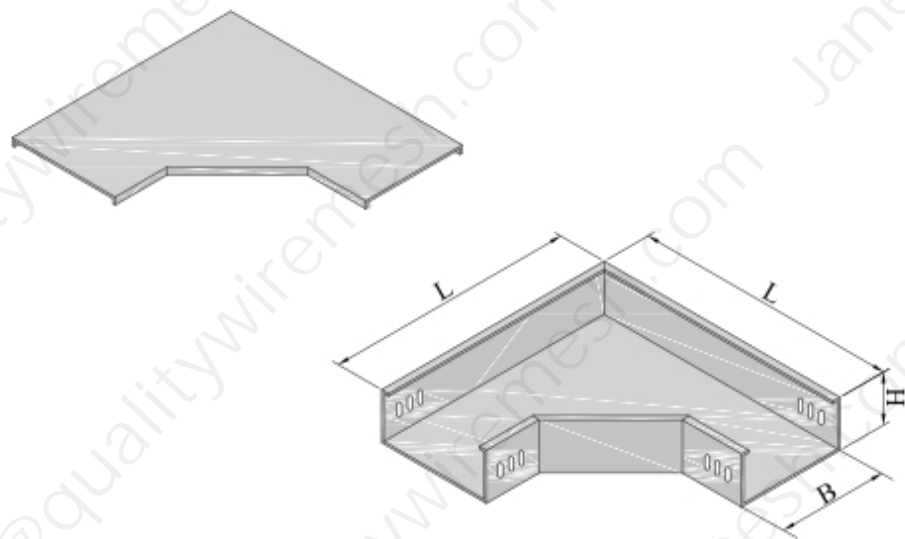


选型参数表

序号	型号	规格 mm		重量 kg/m	配用盖板	
		B	H		型号	重量 kg/m
1	C101-50×25	50	25	1.32	CG101-50	0.87
2	C101-50×50	50	50	1.91	CG101-50	0.87
3	C101-100×50	100	50	3.67	CG101-100	2.20
4	C101-150×50	150	50	4.56	CG101-150	3.09
5	C101-200×50	200	50	5.44	CG101-200	3.97
6	C101-150×75	150	75	5.15	CG101-150	3.09
7	C101-150×100	150	100	6.85	CG101-150	3.09
8	C101-200×100	200	100	7.74	CG101-200	3.97
9	C101-300×100	300	100	9.50	CG101-300	5.74
10	C101-400×100	400	100	11.27	CG101-400	7.50
11	C101-500×100	500	100	13.03	CG101-500	9.27
12	C101-600×100	600	100	14.80	CG101-600	11.03
13	C101-300×150	300	150	11.27	CG101-300	5.74
14	C101-400×150	400	150	13.07	CG101-400	7.50
15	C101-500×150	500	150	14.80	CG101-500	9.27
16	C101-600×150	600	150	16.57	CG101-600	11.03
17	C101-800×150	800	150	26.85	CG101-800	16.73

备注：每件桥架长度 2 米，标准出厂配置有槽体、盖板、连接片、连接钉、卡扣。

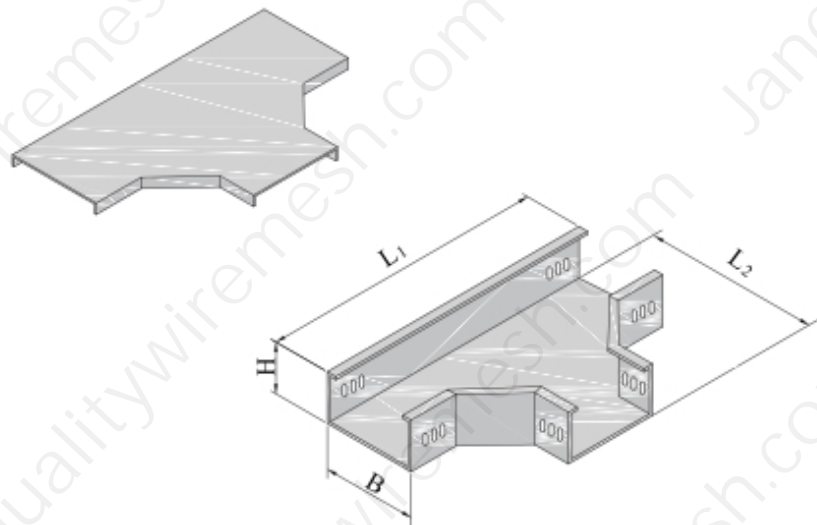
## 槽式水平弯通/JY-C103



选型参数表							
序号	型号	规格 mm			重量 kg/件	配用盖板	
		B	H	L		型号	重量 kg/件
1	C103-50×25	50	25	200	1.50	CG103-50	0.35
2	C103-50×50	50	50	200	2.04	CG103-50	0.35
3	C103-100×50	100	50	250	3.45	CG103-100	0.58
4	C103-150×50	150	50	370	4.36	CG103-150	1.24
5	C103-200×50	200	50	420	6.10	CG103-200	2.18
6	C103-150×75	150	75	370	5.04	CG103-150	1.26
7	C103-150×100	150	100	370	6.34	CG103-150	1.26
8	C103-200×100	200	100	420	7.86	CG103-200	2.18
9	C103-300×100	300	100	520	12.90	CG103-300	4.80
10	C103-400×100	400	100	620	18.54	CG103-400	8.76
11	C103-500×100	500	100	720	25.10	CG103-500	13.44
12	C103-600×100	600	100	820	30.24	CG103-600	17.16
13	C103-300×150	300	150	520	13.61	CG103-300	4.80
14	C103-400×150	400	150	620	21.24	CG103-400	8.76
15	C103-500×150	500	150	720	28.32	CG103-500	13.44
16	C103-600×150	600	150	820	33.59	CG103-600	17.16
17	C103-800×150	800	150	1020	63.83	CG103-800	23.94

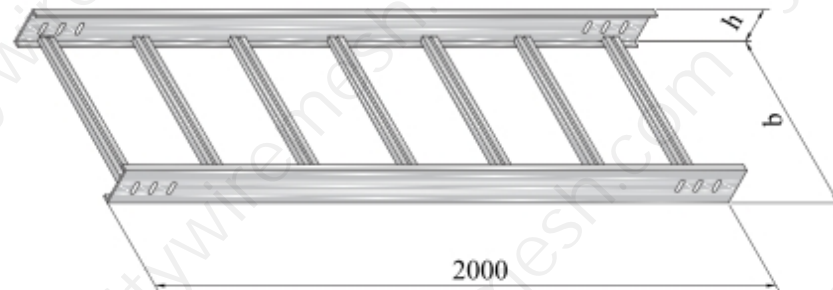


## 槽式水平三通/JY-C104



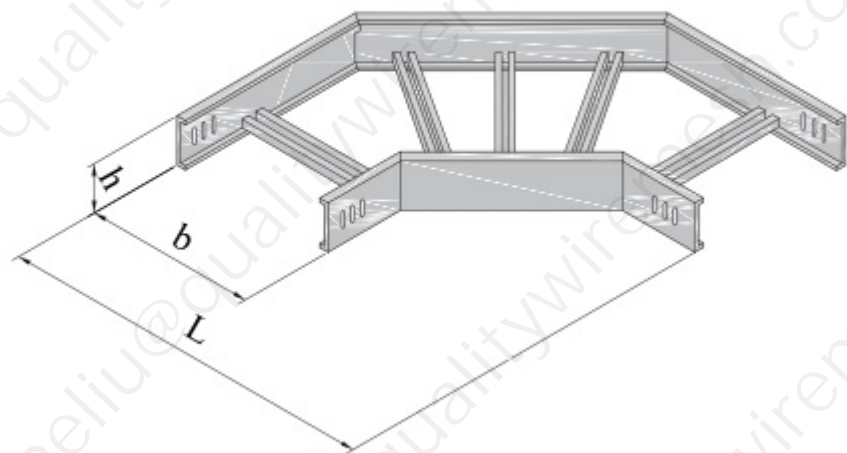
选型参数表								
序号	型号	规格 mm				重量 kg/件	配用盖板	
		B	H	L <sub>1</sub>	L <sub>2</sub>		型号	重量 kg/件
1	C104-50×25	50	25	350	200	2.10	CG104-50	0.50
2	C104-50×50	50	50	350	200	2.33	CG104-50	0.50
3	C104-100×50	100	50	400	250	5.11	CG104-100	1.11
4	C104-150×50	150	50	590	370	6.42	CG104-150	1.95
5	C104-200×50	200	50	640	420	8.10	CG104-200	3.06
6	C104-150×75	150	75	590	370	6.68	CG104-150	1.95
7	C104-150×100	150	100	590	370	8.03	CG104-150	1.95
8	C104-200×100	200	100	640	420	10.40	CG104-200	3.06
9	C104-300×100	300	100	740	620	16.06	CG104-300	6.58
10	C104-400×100	400	100	840	620	23.87	CG104-400	11.44
11	C104-500×100	500	100	940	720	34.15	CG104-500	17.63
12	C104-600×100	600	100	1040	870	38.33	CG104-600	29.16
13	C104-300×150	300	150	740	520	19.37	CG104-300	6.58
14	C104-400×150	400	150	840	620	27.00	CG104-400	11.44
15	C104-500×150	500	150	940	720	37.37	CG104-500	17.63
16	C104-600×150	600	150	1040	870	41.98	CG104-600	29.16
17	C104-800×150	800	150	1240	1070	63.66	CG104-800	33.17

## 梯架式直通（一）/JY-T101



选型参数表						
序号	型号	规格 mm		重量 kg/m	配用盖板	
		b	h		型号	重量 kg/m
1	T101-200×60	200	60	4.80	TG200	3.50
2	T101-200×100		100	6.67		
3	T101-200×150		150	8.44		
4	T101-300×60	300	60	5.46	TG300	4.97
5	T101-300×100		100	7.32		
6	T101-300×150		150	9.09		
7	T101-400×60	400	60	6.11	TG400	8.13
8	T101-400×100		100	7.98		
9	T101-400×150		150	9.75		
10	T101-500×60	500	60	6.77	TG500	9.87
11	T101-500×100		100	8.64		
12	T101-500×150		150	10.41		
13	T101-600×60	600	60	7.43	TG600	11.70
14	T101-600×100		100	9.29		
15	T101-600×150		150	11.06		
16	T101-800×60	800	60	8.73	TG800	15.36
17	T101-800×100		100	10.61		
18	T101-800×150		150	12.38		

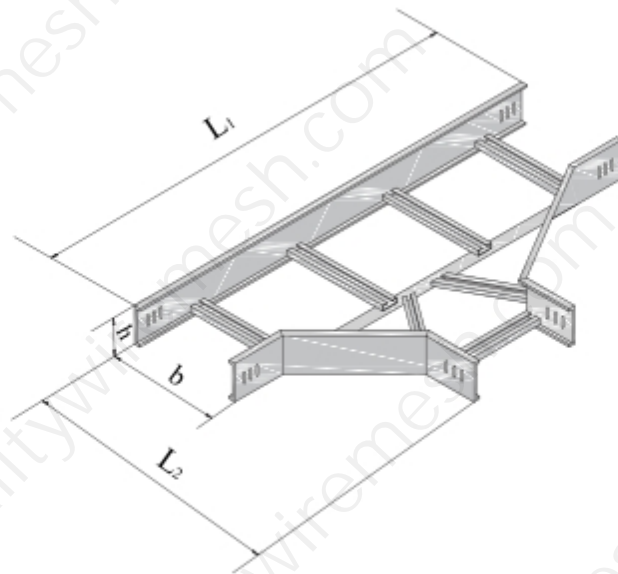
## 梯架式水平弯通/JY-T103



选型参数表

序号	型号	规格 mm			重量 kg/件	配用盖板	
		b	h	L		型号	重量 kg/件
1	T103-200×60	200	60	460	4.98	TG200	3.80
2	T103-200×100		100		5.89		
3	T103-200×150		150		9.14		
4	T103-300×60	300	60	560	6.55	TG300	4.70
5	T103-300×100		100		7.56		
6	T103-300×150		150		10.48		
7	T103-400×60	400	60	660	10.66	TG400	8.04
8	T103-400×100		100		12.35		
9	T103-400×150		150		15.92		
10	T103-500×60	500	60	760	12.68	TG500	12.70
11	T103-500×100		100		13.46		
12	T103-500×150		150		18.32		
13	T103-600×60	600	60	860	14.69	TG600	15.90
14	T103-600×100		100		16.73		
15	T103-600×150		150		20.70		
16	T103-800×60	800	60	1110	18.71	TG800	23.00
17	T103-800×100		100		21.13		
18	T103-800×150		150		25.49		

# 梯架式水平三通/JY-T104



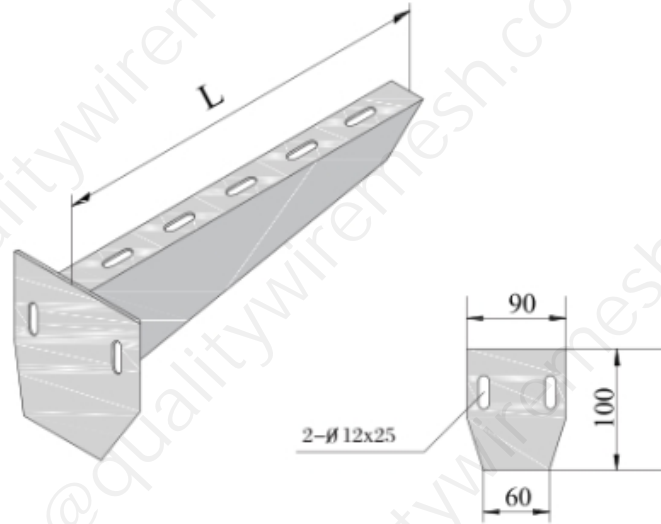
选型参数表

序号	型号	规格 mm				重量 kg/件	配用盖板	
		b	h	L <sub>1</sub>	L <sub>2</sub>		型号	重量 kg/件
1	T104-200×60	200	60	720	460	6.94	TG200	6.50
2	T104-200×100		100			8.16		
3	T104-200×150		150			13.60		
4	T104-300×60	300	60	820	560	8.94	TG300	8.59
5	T104-300×100		100			10.24		
6	T104-300×150		150			14.97		
7	T104-400×60	400	60	920	660	14.97	TG400	14.80
8	T104-400×100		100			16.62		
9	T104-400×150		150			21.73		
10	T104-500×60	500	60	1020	760	17.09	TG500	18.20
11	T104-500×100		100			19.24		
12	T104-500×150		150			24.48		
13	T104-600×60	600	60	1120	860	19.61	TG600	25.50
14	T104-600×100		100			21.86		
15	T104-600×150		150			27.23		
16	T104-800×60	800	60	1320	1060	24.46	TG800	32.10
17	T104-800×100		100			27.09		
18	T104-800×150		150			32.71		



TB-102型托臂，作为墙面水平安装桥架时的专用托臂，广泛使用。

## 托臂（二）/JY-TB102



序号	型号	规格 mm	理论重量	配用桥架
		L	kg/件	b
1	TB102-1	110	0.63	50
2	TB102-2	160	0.68	100
3	TB102-3	210	0.74	150
4	TB102-4	260	0.95	200
5	TB102-5	310	1.04	250
6	TB102-6	410	1.22	350
7	TB102-7	510	1.59	450
8	TB102-8	610	2.24	550
9	TB102-9	810	2.91	750

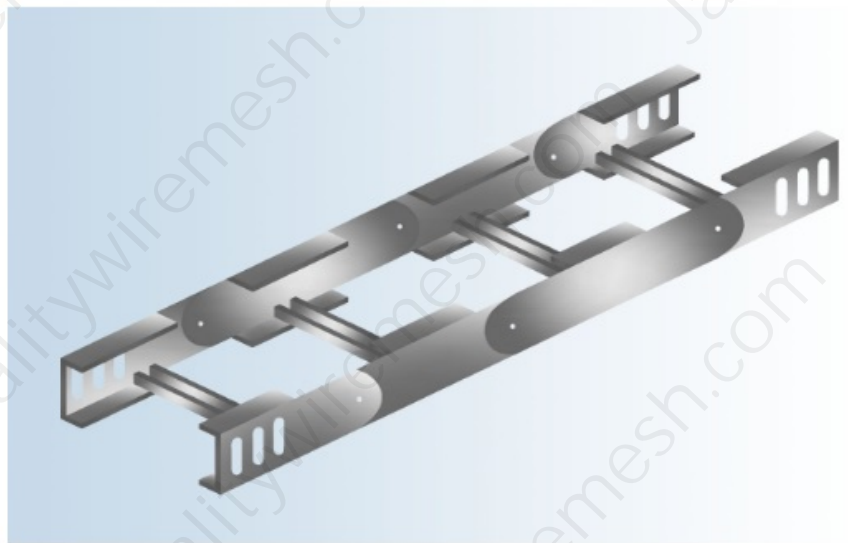
产品编号: JY-T108

产品名称: 梯架式垂直转动弯通

产品类别: 梯架式电缆桥架

产品规格型号:

选型参数表							
序号	型号	规格 mm			重量 kg/件	配用盖板	
		b	h	L		型号	重量 kg/件
1	T108-200×60	200	60	650	5.12	TG200	17.58
2	T108-200×100		100		6.88		
3	T108-200×150		150		10.96		
4	T108-300×60	300	60	700	7.21	TG300	20.11
5	T108-300×100		100		9.37		
6	T108-300×150		150		11.28		
7	T108-400×60	400	60	750	9.76	TG400	33.67
8	T108-400×100		100		12.49		
9	T108-400×150		150		17.67		
10	T108-500×60	500	60	800	10.75	TG500	36.79
11	T108-500×100		100		13.35		
12	T108-500×150		150		16.45		
13	T108-600×60	600	60	850	13.61	TG600	38.45
14	T108-600×100		100		16.85		
15	T108-600×150		150		18.49		
16	T108-800×60	800	60	900	14.52	TG800	47.73
17	T108-800×100		100		17.46		
18	T108-800×150		150		22.79		



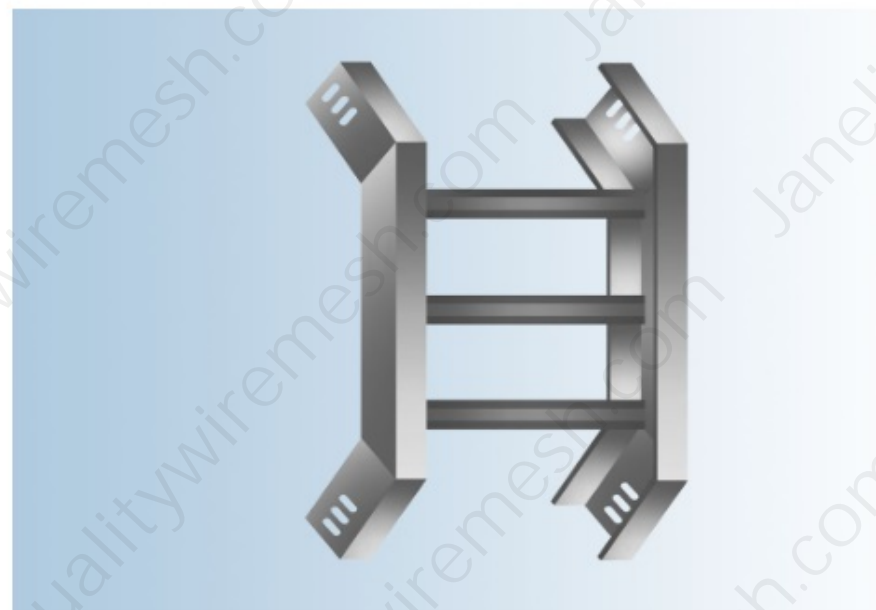
产品编号: JY-T107

产品名称: 梯架式垂直凸弯通

产品类别: 梯架式电缆桥架

产品规格型号:

选型参数表							
序号	型号	规格 mm			重量 kg/件	配用盖板	
		b	h	L		型号	重量 kg/件
1	T107-200×60	200	60	370	3.60	TG200	4.45
2	T107-200×100		100	410	4.50		
3	T107-200×150		150	460	6.54		
4	T107-300×60	300	60	370	4.38	TG300	6.01
5	T107-300×100		100	410	5.29		
6	T107-300×150		150	460	7.10		
7	T107-400×60	400	60	370	6.81	TG400	8.78
8	T107-400×100		100	410	8.16		
9	T107-400×150		150	460	10.54		
10	T107-500×60	500	60	370	7.74	TG500	10.45
11	T107-500×100		100	410	9.08		
12	T107-500×150		150	460	11.49		
13	T107-600×60	600	60	370	8.68	TG600	16.86
14	T107-600×100		100	410	10.02		
15	T107-600×150		150	460	12.25		
16	T107-800×60	800	60	370	10.54	TG800	19.48
17	T107-800×100		100	410	11.87		
18	T107-800×150		150	460	14.45		



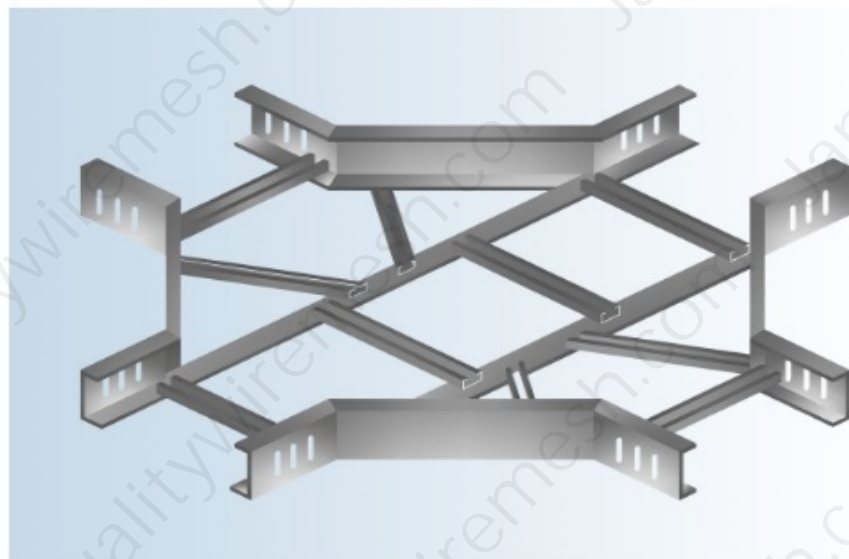
产品编号: JY-T105

产品名称: 梯架式水平四通

产品类别: 梯架式电缆桥架

产品规格型号:

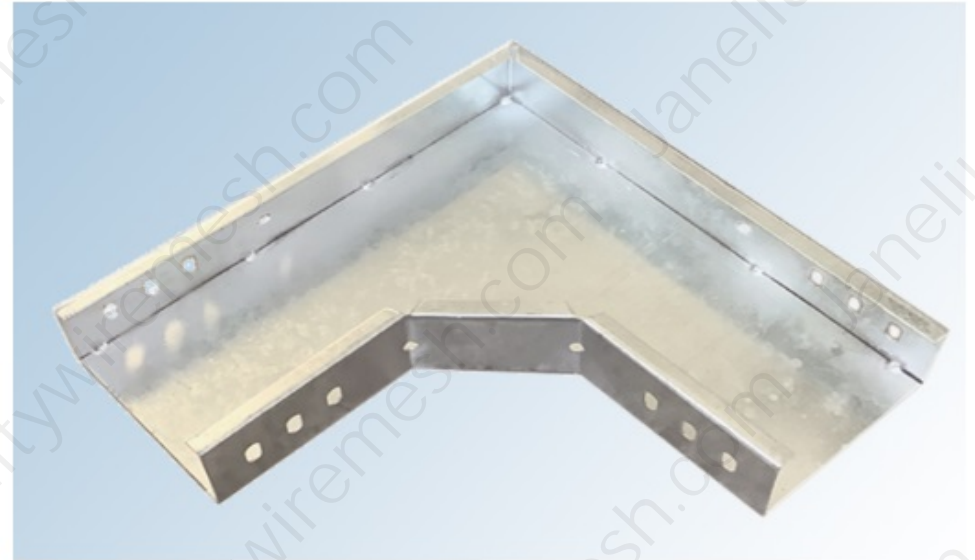
选型参数表							
序号	型号	规格 mm			重量 kg/件	配用盖板	
		b	h	L		型号	重量 kg/件
1	T105-200×60	200	60	720	8.94	TG200	9.15
2	T105-200×100		100		10.24		
3	T105-200×150		150		16.83		
4	T105-300×60	300	60	820	11.52	TG300	13.57
5	T105-300×100		100		12.89		
6	T105-300×150		150		19.40		
7	T105-400×60	400	60	920	18.73	TG400	18.68
8	T105-400×100		100		20.76		
9	T105-400×150		150		26.36		
10	T105-500×60	500	60	1020	18.69	TG500	23.57
11	T105-500×100		100		24.00		
12	T105-500×150		150		29.60		
13	T105-600×60	600	60	1120	25.23	TG600	40.29
14	T105-600×100		100		27.24		
15	T105-600×150		150		32.85		
16	T105-800×60	800	60	1320	31.71	TG800	56.01
17	T105-800×100		100		33.73		
18	T105-800×150		150		39.31		





2.2 槽式水平弯头桥架全部规格型号:

选型参数表							
序号	型号	规格 mm			重量 kg/件	配用盖板	
		B	H	L		型号	重量 kg/件
1	C103-50×25	50	25	200	1.50	CG103-50	0.35
2	C103-50×50	50	50	200	2.04	CG103-50	0.35
3	C103-100×50	100	50	250	3.45	CG103-100	0.58
4	C103-150×50	150	50	370	4.36	CG103-150	1.24
5	C103-200×50	200	50	420	6.10	CG103-200	2.18
6	C103-150×75	150	75	370	5.04	CG103-150	1.26
7	C103-150×100	150	100	370	6.34	CG103-150	1.26
8	C103-200×100	200	100	420	7.86	CG103-200	2.18
9	C103-300×100	300	100	520	12.90	CG103-300	4.80
10	C103-400×100	400	100	620	18.54	CG103-400	8.76
11	C103-500×100	500	100	720	25.10	CG103-500	13.44
12	C103-600×100	600	100	820	30.24	CG103-600	17.16
13	C103-300×150	300	150	520	13.61	CG103-300	4.80
14	C103-400×150	400	150	620	21.24	CG103-400	8.76
15	C103-500×150	500	150	720	28.32	CG103-500	13.44
16	C103-600×150	600	150	820	33.59	CG103-600	17.16
17	C103-800×150	800	150	1020	63.83	CG103-800	23.94



2.2 槽式水平三通桥架全部规格型号:

选型参数表								
序号	型号	规格 mm				重量 kg/件	配用盖板	
		B	H	L <sub>1</sub>	L <sub>2</sub>		型号	重量 kg/件
1	C104-50×25	50	25	350	200	2.10	CG104-50	0.50
2	C104-50×50	50	50	350	200	2.33	CG104-50	0.50
3	C104-100×50	100	50	400	250	5.11	CG104-100	1.11
4	C104-150×50	150	50	590	370	6.42	CG104-150	1.95
5	C104-200×50	200	50	640	420	8.10	CG104-200	3.06
6	C104-150×75	150	75	590	370	6.68	CG104-150	1.95
7	C104-150×100	150	100	590	370	8.03	CG104-150	1.95
8	C104-200×100	200	100	640	420	10.40	CG104-200	3.06
9	C104-300×100	300	100	740	620	16.06	CG104-300	6.58
10	C104-400×100	400	100	840	620	23.87	CG104-400	11.44
11	C104-500×100	500	100	940	720	34.15	CG104-500	17.63
12	C104-600×100	600	100	1040	870	38.33	CG104-600	29.16
13	C104-300×150	300	150	740	520	19.37	CG104-300	6.58
14	C104-400×150	400	150	840	620	27.00	CG104-400	11.44
15	C104-500×150	500	150	940	720	37.37	CG104-500	17.63
16	C104-600×150	600	150	1040	870	41.98	CG104-600	29.16
17	C104-800×150	800	150	1240	1070	63.66	CG104-800	33.17

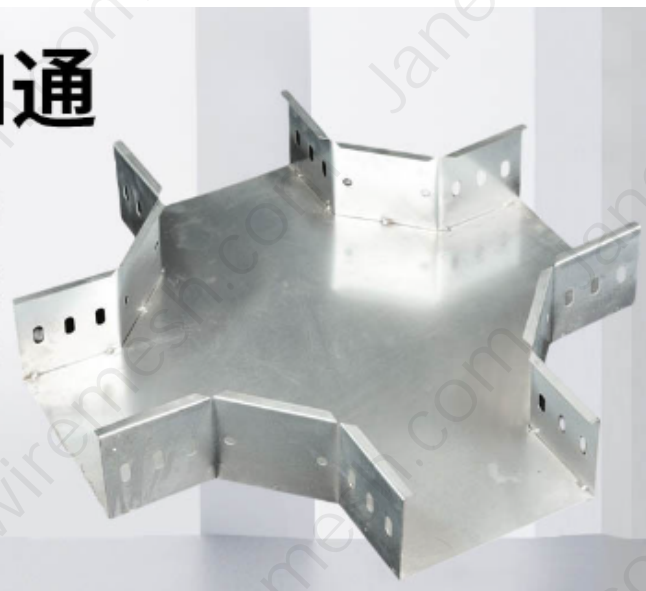


2.2 槽式水平四通桥架全部规格型号:

选型参数表							
序号	型号	规格 mm			重量 kg/件	配用盖板	
		B	H	L		型号	重量 kg/件
1	C111-50×25	50	25	350	1.79	CG111-50	0.53
2	C111-50×50	50	50	350	3.02	CG111-50	0.53
3	C111-100×50	100	50	400	6.42	CG111-100	1.35
4	C111-150×50	150	50	590	7.42	CG111-150	2.75
5	C111-200×50	200	50	640	10.12	CG111-200	3.80
6	C111-150×75	150	75	590	8.54	CG111-150	2.20
7	C111-150×100	150	100	590	9.94	CG111-150	2.20
8	C111-200×100	200	100	640	12.83	CG111-200	3.80
9	C111-300×100	300	100	740	20.33	CG111-300	8.32
10	C111-400×100	400	100	840	29.34	CG111-400	14.58
11	C111-500×100	500	100	940	40.03	CG111-500	30.10
12	C111-600×100	600	100	1040	46.69	CG111-600	36.54
13	C111-300×150	300	150	740	23.44	CG111-300	8.32
14	C111-400×150	400	150	840	32.26	CG111-400	14.58
15	C111-500×150	500	150	940	43.81	CG111-500	30.10
16	C111-600×150	600	150	1040	50.50	CG111-600	36.54
17	C111-800×150	800	150	1240	68.50	CG111-800	42.28

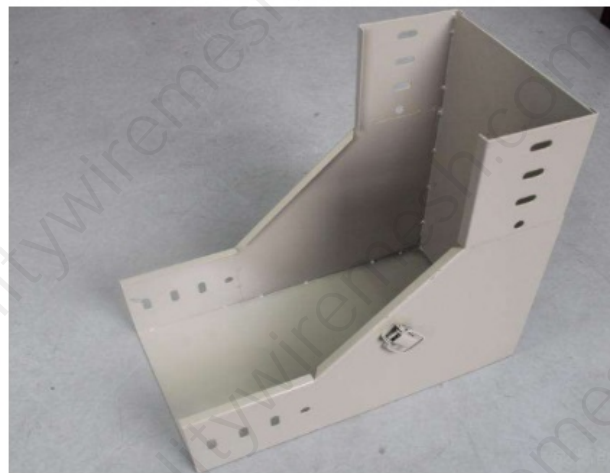
## 水平四通

- ✓ 规格多样
- ✓ 量大从优
- ✓ 免费拿样



2.2 槽式垂直凹弯通电缆桥架全部规格型号:

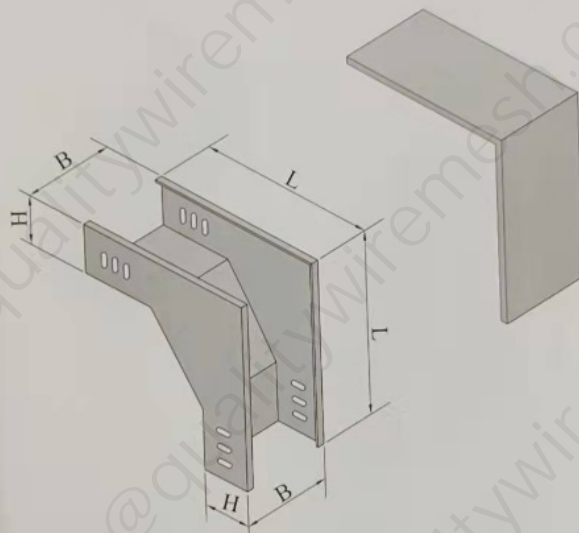
选型参数表							
序号	型号	规格 mm			重量 kg/件	配用盖板	
		B	H	L		型号	重量 kg/件
1	C114-50×25	50	25	175	2.15	CG114-50	0.30
2	C114-50×50	50	50	200	2.78	CG114-50	0.30
3	C114-100×50	100	50	200	3.89	CG114-100	0.45
4	C114-150×50	150	50	270	5.40	CG114-150	0.80
5	C114-200×50	200	50	270	7.13	CG114-200	1.25
6	C114-150×75	150	75	295	5.91	CG114-150	0.80
7	C114-150×100	150	100	320	7.80	CG114-150	1.08
8	C114-200×100	200	100	320	9.81	CG114-200	1.25
9	C114-300×100	300	100	320	14.27	CG114-300	2.49
10	C114-400×100	400	100	320	20.33	CG114-400	4.37
11	C114-500×100	500	100	320	23.13	CG114-500	6.56
12	C114-600×100	600	100	320	25.87	CG114-600	7.74
13	C114-300×150	300	150	370	13.73	CG114-300	2.29
14	C114-400×150	400	150	370	21.31	CG114-400	4.79
15	C114-500×150	500	150	370	24.86	CG114-500	7.01
16	C114-600×150	600	150	370	27.35	CG114-600	8.64
17	C114-800×150	800	150	370	41.13	CG114-800	9.91





选型参数表							
序号	型号	规格 mm			重量 kg/件	配用盖板	
		B	H	L		型号	重量 kg/件
1	C113-50×25	50	25	175	1.82	CG113-50	0.48
2	C113-50×50	50	50	200	2.36	CG113-50	0.48
3	C113-100×50	100	50	200	3.27	CG113-100	0.92
4	C113-150×50	150	50	270	4.49	CG113-150	1.53
5	C113-200×50	200	50	270	5.87	CG113-200	2.31
6	C113-150×75	150	75	295	4.73	CG113-150	1.95
7	C113-150×100	150	100	320	6.43	CG113-150	1.98
8	C113-200×100	200	100	320	6.37	CG113-200	2.32
9	C113-300×100	300	100	320	9.23	CG113-300	4.14
10	C113-400×100	400	100	320	12.59	CG113-400	6.79
11	C113-500×100	500	100	320	20.58	CG113-500	9.68
12	C113-600×100	600	100	320	22.71	CG113-600	11.47
13	C113-300×150	300	150	370	9.65	CG113-300	4.82
14	C113-400×150	400	150	370	15.06	CG113-400	7.73
15	C113-500×150	500	150	370	19.20	CG113-500	10.76
16	C113-600×150	600	150	370	20.89	CG113-600	12.43
17	C113-800×150	800	150	370	33.13	CG113-800	16.15

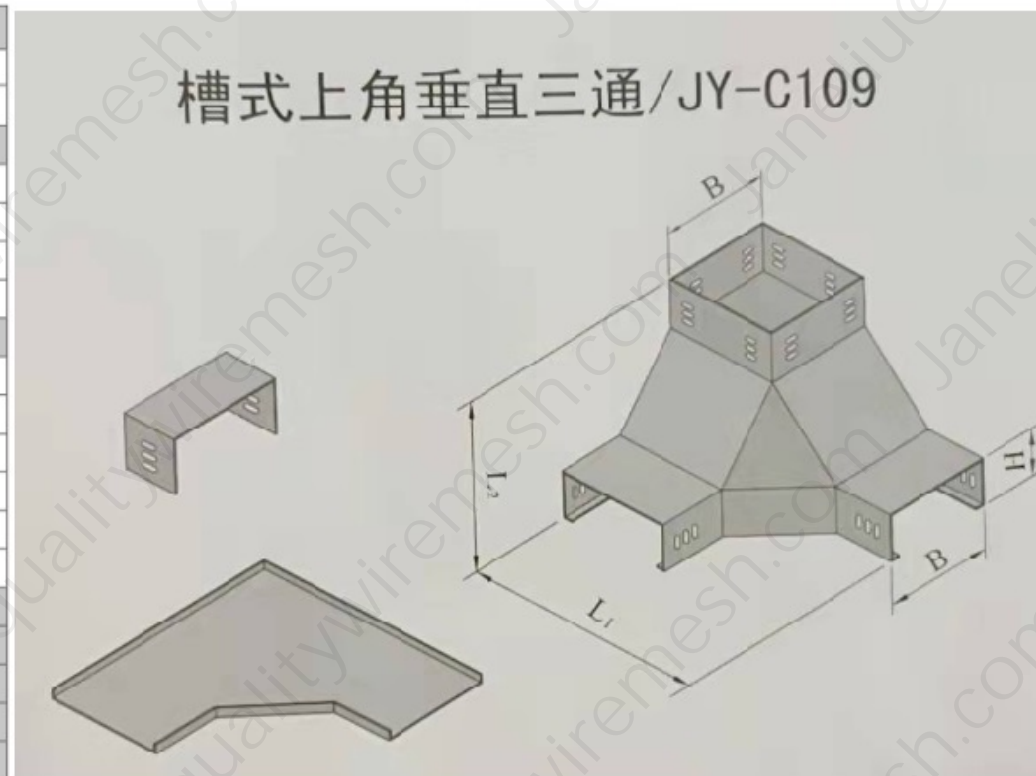
槽式垂直凸弯通/JY-C113





## 2.2 槽式上角垂直三通电缆桥架全部规格型号:

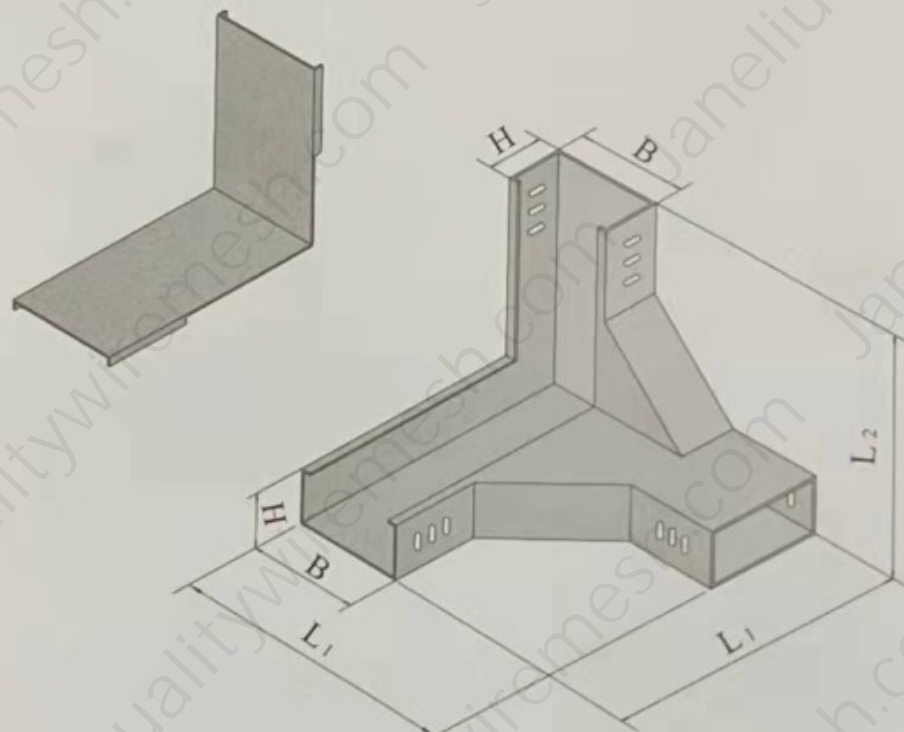
选型参数表								
序号	型号	规格 mm				重量 kg/件	配用盖板	
		B	H	L <sub>1</sub>	L <sub>2</sub>		型号	重量 kg/件
1	C109-50×25	50	25	200	175	2.69	CG109-50	0.71
2	C109-50×50	50	50	200	200	3.71	CG109-50	0.71
3	C109-100×50	100	50	250	200	5.03	CG109-100	1.19
4	C109-150×50	150	50	370	270	7.56	CG109-150	2.18
5	C109-200×50	200	50	420	270	12.17	CG109-200	3.48
6	C109-150×75	150	75	370	295	7.04	CG109-150	3.02
7	C109-150×100	150	100	370	320	7.68	CG109-150	2.18
8	C109-200×100	200	100	420	320	10.32	CG109-200	3.48
9	C109-300×100	300	100	520	320	16.86	CG109-300	5.63
10	C109-400×100	400	100	620	320	25.33	CG109-400	9.44
11	C109-500×100	500	100	720	320	32.68	CG109-500	14.35
12	C109-600×100	600	100	820	320	41.56	CG109-600	18.14
13	C109-300×150	300	150	520	370	19.16	CG109-300	5.63
14	C109-400×150	400	150	620	370	28.10	CG109-400	9.48
15	C109-500×150	500	150	720	370	38.22	CG109-500	14.35
16	C109-600×150	600	150	820	370	44.70	CG109-600	18.14
17	C109-800×150	800	150	1020	370	81.84	CG109-800	22.20



选型参数表

序号	型号	规格 mm				重量 kg/件	配用盖板	
		B	H	L <sub>1</sub>	L <sub>2</sub>		型号	重量 kg/件
1	C110-50×25	50	25	200	175	2.69	CG110-50	0.35
2	C110-50×50	50	50	200	200	3.71	CG110-50	0.35
3	C110-100×50	100	50	250	200	5.03	CG110-100	0.57
4	C110-150×50	150	50	370	270	7.56	CG110-150	1.16
5	C110-200×50	200	50	420	270	12.17	CG110-200	1.97
6	C110-150×75	150	75	370	295	7.04	CG110-150	1.29
7	C110-150×100	150	100	370	320	7.68	CG110-150	1.58
8	C110-200×100	200	100	420	320	10.32	CG110-200	1.37
9	C110-300×100	300	100	520	320	16.86	CG110-300	3.11
10	C110-400×100	400	100	620	320	25.33	CG110-400	5.83
11	C110-500×100	500	100	720	320	32.68	CG110-500	9.10
12	C110-600×100	600	100	820	320	41.56	CG110-600	12.01
13	C110-300×150	300	150	520	370	21.91	CG110-300	2.81
14	C110-400×150	400	150	620	370	32.10	CG110-400	5.42
15	C110-500×150	500	150	720	370	44.03	CG110-500	8.57
16	C110-600×150	600	150	820	370	51.38	CG110-600	11.39
17	C110-800×150	800	150	1020	370	70.31	CG110-800	15.17

## 槽式下角垂直三通/JY-C110



产品编号: JY-C107

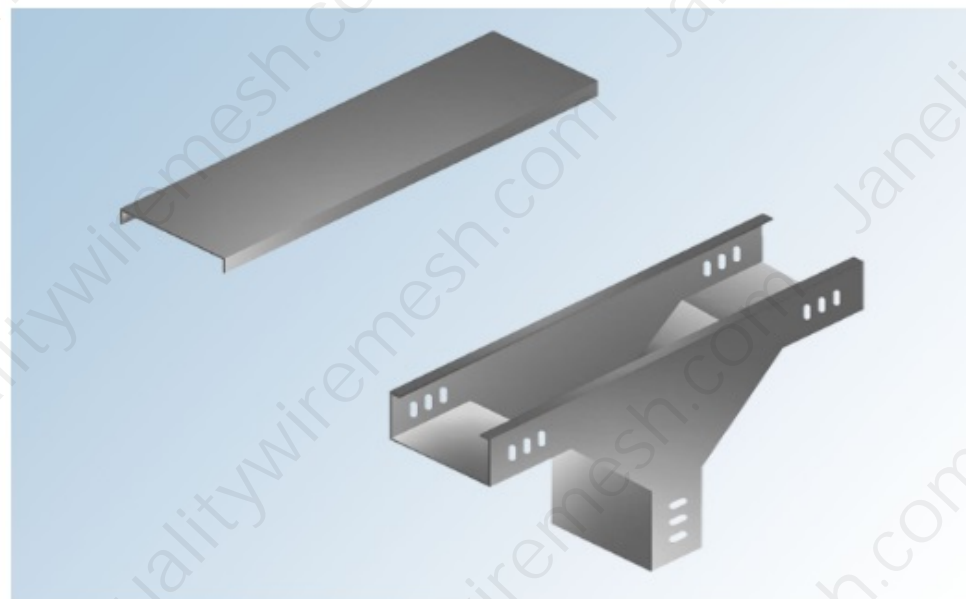
产品名称: 槽式上边垂直三通

产品类别: 槽式电缆桥架

产品规格型号:

选型参数表

序号	型号	规格 mm				重量 kg/件	配用盖板	
		B	H	L <sub>1</sub>	L <sub>2</sub>		型号	重量 kg/件
1	C107-50×25	50	25	350	175	1.43	CG107-50	0.53
2	C107-50×50	50	50	350	200	1.76	CG107-50	0.53
3	C107-100×50	100	50	400	200	4.35	CG107-100	1.42
4	C107-150×50	150	50	590	270	4.86	CG107-150	2.05
5	C107-200×50	200	50	640	270	9.49	CG107-200	3.85
6	C107-150×75	150	75	590	295	5.49	CG107-150	2.05
7	C107-150×100	150	100	590	320	5.68	CG107-150	2.05
8	C107-200×100	200	100	640	320	10.28	CG107-200	3.85
9	C107-300×100	300	100	740	320	18.84	CG107-300	7.86
10	C107-400×100	400	100	840	320	34.18	CG107-400	9.18
11	C107-500×100	500	100	940	320	36.29	CG107-500	9.78
12	C107-600×100	600	100	1040	320	43.44	CG107-600	11.63
13	C107-300×150	300	150	740	370	20.95	CG107-300	7.86
14	C107-400×150	400	150	840	370	36.72	CG107-400	9.18
15	C107-500×150	500	150	940	370	39.11	CG107-500	9.28
16	C107-600×150	600	150	1040	370	46.55	CG107-600	11.63
17	C107-800×150	800	150	1240	370	60.91	CG107-800	15.23



## 2.2 槽式垂直左上弯通电缆桥架全部规格型号:

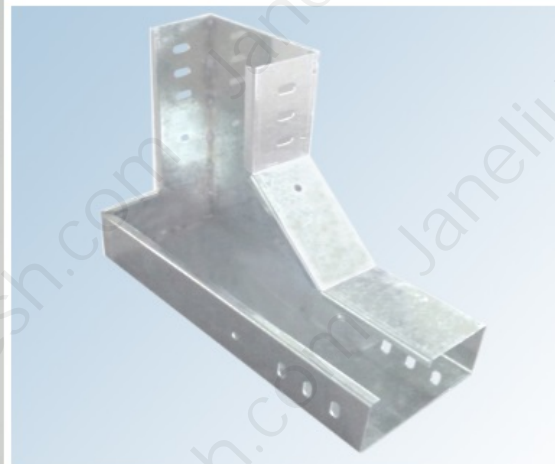
选型参数表								
序号	型号	规格 mm				重量 kg/件	配用盖板	
		B	H	L <sub>1</sub>	L <sub>2</sub>		型号	重量 kg/件
1	C115-50×25	50	25	200	175	1.01	CG115-50	0.38
2	C115-50×50	50	50	200	200	1.31	CG115-50	0.38
3	C115-100×50	100	50	250	200	3.54	CG115-100	1.34
4	C115-150×50	150	50	370	270	4.55	CG115-150	1.85
5	C115-200×50	200	50	420	270	9.09	CG115-200	3.75
6	C115-150×75	150	75	370	295	5.00	CG115-150	1.85
7	C115-150×100	150	100	370	320	5.30	CG115-150	1.85
8	C115-200×100	200	100	420	320	8.66	CG115-200	3.75
9	C115-300×100	300	100	520	320	14.66	CG115-300	5.81
10	C115-400×100	400	100	620	320	33.02	CG115-400	8.36
11	C115-500×100	500	100	720	320	37.44	CG115-500	14.04
12	C115-600×100	600	100	820	320	43.68	CG115-600	16.38
13	C115-300×150	300	150	520	370	16.42	CG115-300	6.16
14	C115-400×150	400	150	620	370	35.80	CG115-400	8.37
15	C115-500×150	500	150	720	370	40.04	CG115-500	14.04
16	C115-600×150	600	150	820	370	46.74	CG115-600	16.38
17	C115-800×150	800	150	1020	370	67.60	CG115-800	23.40





选型参数表								
序号	型号	规格 mm				重量 kg/件	配用盖板	
		B	H	L <sub>1</sub>	L <sub>2</sub>		型号	重量 kg/件
1	C116-50×25	50	25	200	175	1.02	CG116-50	0.39
2	C116-50×50	50	50	200	200	1.32	CG116-50	0.39
3	C116-100×50	100	50	250	200	2.18	CG116-100	1.28
4	C116-150×50	150	50	370	270	3.55	CG116-150	1.88
5	C116-200×50	200	50	420	270	8.85	CG116-200	3.84
6	C116-150×75	150	75	370	295	4.83	CG116-150	1.88
7	C116-150×100	150	100	370	320	5.58	CG116-150	1.88
8	C116-200×100	200	100	420	320	10.23	CG116-200	3.84
9	C116-300×100	300	100	520	320	30.30	CG116-300	7.15
10	C116-400×100	400	100	620	320	31.98	CG116-400	9.27
11	C116-500×100	500	100	720	320	35.05	CG116-500	11.32
12	C116-600×100	600	100	820	320	38.70	CG116-600	13.91
13	C116-300×150	300	150	520	370	32.06	CG116-300	7.15
14	C116-400×150	400	150	620	370	34.89	CG116-400	9.27
15	C116-500×150	500	150	720	370	38.14	CG116-500	11.32
16	C116-600×150	600	150	820	370	41.80	CG116-600	13.91
17	C116-800×150	800	150	1020	370	78.31	CG116-800	18.94

槽式垂直左下弯通/JY-C116



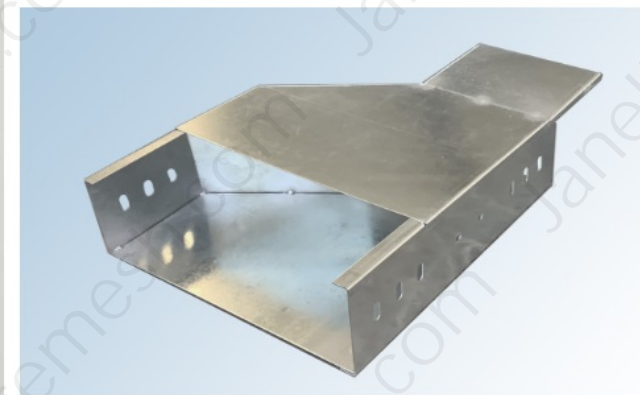
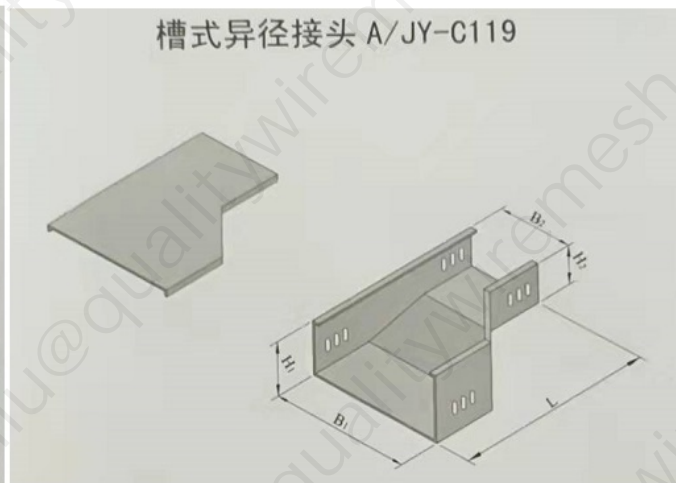


选型参数表								
序号	型号	规格 mm				重量 kg/件	配用盖板	
		B	H	L <sub>1</sub>	L <sub>2</sub>		型号	重量 kg/件
1	C117-50×25	50	25	200	175	1.01	CG117-50	0.38
2	C117-50×50	50	50	200	200	1.31	CG117-50	0.38
3	C117-100×50	100	50	250	200	3.54	CG117-100	1.34
4	C117-150×50	150	50	370	270	4.55	CG117-150	1.85
5	C117-200×50	200	50	420	270	9.09	CG117-200	3.75
6	C117-150×75	150	75	370	295	5.00	CG117-150	1.85
7	C117-150×100	150	100	370	320	5.30	CG117-150	1.85
8	C117-200×100	200	100	420	320	8.68	CG117-200	3.75
9	C117-300×100	300	100	520	320	14.66	CG117-300	6.16
10	C117-400×100	400	100	620	320	33.46	CG117-400	8.36
11	C117-500×100	500	100	720	320	37.44	CG117-500	14.04
12	C117-600×100	600	100	820	320	43.68	CG117-600	16.38
13	C117-300×150	300	150	520	370	16.42	CG117-300	6.16
14	C117-400×150	400	150	620	370	35.80	CG117-400	8.36
15	C117-500×150	500	150	720	370	40.04	CG117-500	14.04
16	C117-600×150	600	150	820	370	46.74	CG117-600	16.38
17	C117-800×150	800	150	1020	370	67.60	CG117-800	25.43



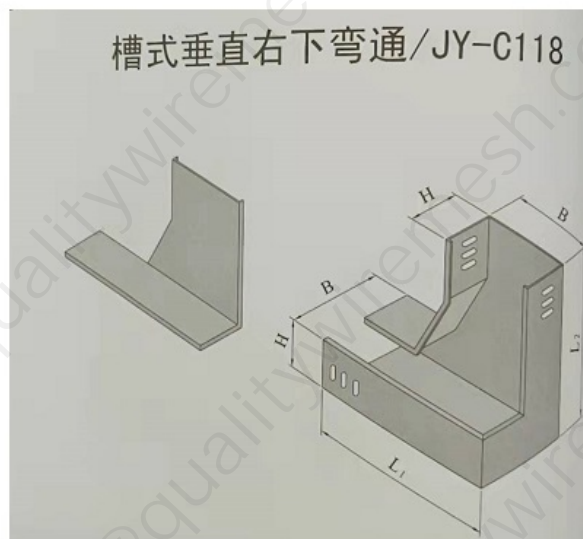
2.2 槽式直通桥架全部规格型号:

选型参数表							
序号	型号	规格 mm			重量 kg/件	配用盖板	
		$B_1 \times H_1$	$B_2 \times H_2$	L		型号	重量 kg/件
1	C119-1	600×150	150×100	650	7.72	CG119-1	4.60
2	C119-2	600×150	200×100	600	7.40	CG119-2	4.51
3	C119-3	600×150	300×100	500	6.62	CG119-3	4.21
4	C119-4	600×150	400×100	400	5.66	CG119-4	3.74
5	C119-5	600×150	500×100	300	4.58	CG119-5	3.08
6	C119-6	500×150	150×100	550	6.05	CG119-6	3.41
7	C119-7	500×150	200×100	500	5.72	CG119-7	3.15
8	C119-8	500×150	300×100	400	4.95	CG119-8	3.03
9	C119-9	500×150	400×100	300	4.03	CG119-9	2.55
10	C119-10	400×150	150×100	450	4.55	CG119-10	2.41
11	C119-11	400×150	200×100	400	4.23	CG119-11	2.32
12	C119-12	300×150	150×100	350	3.23	CG119-12	1.58
13	C119-13	300×150	200×100	300	2.92	CG119-13	1.49
14	C119-14	400×150	300×100	300	4.23	CG119-14	2.02



2.2 槽式垂直右下弯通电缆桥架全部规格型号:

选型参数表								
序号	型号	规格 mm				重量 kg/件	配用盖板	
		B	H	L <sub>1</sub>	L <sub>2</sub>		型号	重量 kg/件
1	C118-50×25	50	25	200	175	1.02	CG118-50	0.39
2	C118-50×50	50	50	200	200	1.32	CG118-50	0.39
3	C118-100×50	100	50	250	200	3.51	CG118-100	1.32
4	C118-150×50	150	50	370	270	3.85	CG118-150	1.88
5	C118-200×50	200	50	420	270	7.67	CG118-200	3.84
6	C118-150×75	150	75	370	295	4.32	CG118-150	1.88
7	C118-150×100	150	100	370	320	5.58	CG118-150	1.88
8	C118-200×100	200	100	420	320	8.87	CG118-200	3.84
9	C118-300×100	300	100	520	320	30.30	CG118-300	7.15
10	C118-400×100	400	100	620	320	32.45	CG118-400	9.27
11	C118-500×100	500	100	720	320	35.05	CG118-500	4.32
12	C118-600×100	600	100	820	320	38.70	CG118-600	13.91
13	C118-300×150	300	150	520	370	32.06	CG118-300	7.15
14	C118-400×150	400	150	620	370	34.89	CG118-400	9.27
15	C118-500×150	500	150	720	370	38.14	CG118-500	11.32
16	C118-600×150	600	150	820	370	41.80	CG118-600	13.91
17	C118-800×150	800	150	1020	370	78.31	CG118-800	18.94



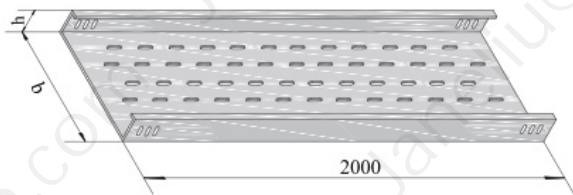
### 1、托盘式直通桥架产品信息

产品编号: JY-P101

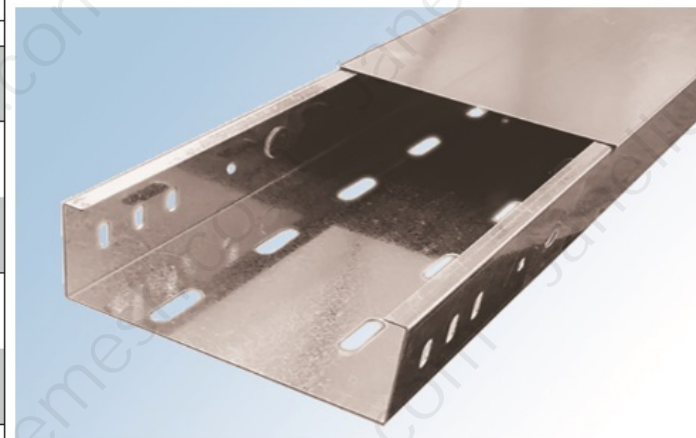
产品名称: 托盘式直通桥架

产品类别: 托盘式**电缆桥架**

产品示意图如下:



选型参数表						
序号	型号	规格 mm		重量	配用盖板	
		b	h	kg/m	型号	重量 kg/m
1	P101-200×60		60	8.83		
2	P101-200×100	200	100	12.43	PG200	3.50
3	P101-200×150		150	14.91		
4	P101-300×60	300	60	13.02	PG300	4.97
5	P101-300×100		100	14.59		
6	P101-300×150		150	17.57		
7	P101-400×60	400	60	19.82	PG400	8.13
8	P101-400×100		100	22.47		
9	P101-400×150		150	25.76		
10	P101-500×60	500	60	23.18	PG500	9.87
11	P101-500×100		100	25.77		
12	P101-500×150		150	29.06		
13	P101-600×60	600	60	28.56	PG600	11.70
14	P101-600×100		100	29.07		
15	P101-600×150		150	32.35		
16	P101-800×60	800	60	32.98	PG800	15.36
17	P101-800×100		100	35.67		
18	P101-800×150		150	40.95		





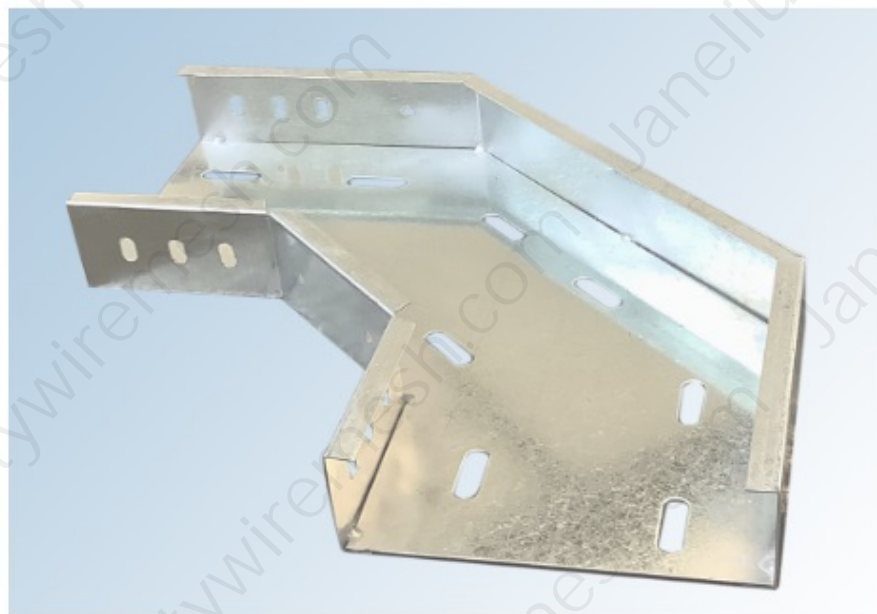
产品名称：托盘式水平弯通

产品类别：托盘式电缆桥架

产品规格型号：

选型参数表

序号	型号	规格 mm			重量 kg/件	配用盖板	
		b	h	L		型号	重量 kg/件
1	P102-200×60	200	60	420	6.94	PG200	3.80
2	P102-200×100		100		8.39		
3	P102-200×150		150		11.17		
4	P102-300×60	300	60	520	9.93	PG300	4.70
5	P102-300×100		100		11.61		
6	P102-300×150		150		18.72		
7	P102-400×60	400	60	620	18.72	PG400	8.04
8	P102-400×100		100		22.28		
9	P102-400×150		150		31.11		
10	P102-500×60	500	60	720	26.36	PG500	12.70
11	P102-500×100		100		29.46		
12	P102-500×150		150		39.50		
13	P102-600×60	600	60	820	33.30	PG600	15.90
14	P102-600×100		100		36.58		
15	P102-600×150		150		46.60		
16	P102-800×60	800	60	1020	43.75	PG800	23.00
17	P102-800×100		100		48.71		
18	P102-800×150		150		66.14		





产品名称: 托盘式垂直凸弯通

产品类别: 托盘式电缆桥架

产品规格型号:

选型参数表

序号	型号	规格 mm			重量 kg/件	配用盖板	
		b	h	L		型号	重量 kg/件
1	P106-200×60	200	60	280	5.12	PG200	4.45
2	P106-200×100		100	320	7.01		
3	P106-200×150		150	370	12.23		
4	P106-300×60	300	60	280	6.93	PG300	6.01
5	P106-300×100		100	320	8.37		
6	P106-300×150		150	370	14.07		
7	P106-400×60	400	60	280	11.28	PG400	8.78
8	P106-400×100		100	320	13.23		
9	P106-400×150		150	370	19.95		
10	P106-500×60	500	60	280	13.10	PG500	10.45
11	P106-500×100		100	320	14.80		
12	P106-500×150		150	370	22.40		
13	P106-600×60	600	60	280	14.91	PG600	16.86
14	P106-600×100		100	320	16.47		
15	P106-600×150		150	370	24.81		
16	P106-800×60	800	60	280	18.56	PG800	19.48
17	P106-800×100		100	320	20.03		
18	P106-800×150		150	370	29.03		



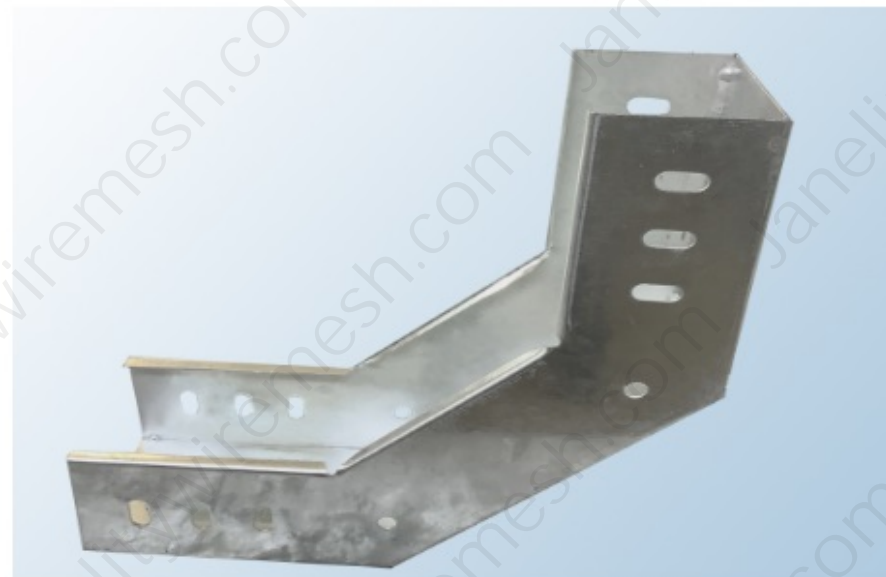
产品名称：托盘式垂直凹弯通

产品类别：托盘式电缆桥架

产品规格型号：

选型参数表

序号	型号	规格 mm			重量 kg/件	配用盖板	
		b	h	L		型号	重量 kg/件
1	P105-200×60	200	60	280	5.19	PG200	3.59
2	P105-200×100		100	320	7.39		
3	P105-200×150		150	370	13.32		
4	P105-300×60	300	60	280	7.25	PG300	5.08
5	P105-300×100		100	320	9.10		
6	P105-300×150		150	370	15.10		
7	P105-400×60	400	60	280	11.80	PG400	8.78
8	P105-400×100		100	320	14.23		
9	P105-400×150		150	370	21.95		
10	P105-500×60	500	60	280	13.87	PG500	10.78
11	P105-500×100		100	320	16.35		
12	P105-500×150		150	370	25.00		
13	P105-600×60	600	60	280	26.08	PG600	12.77
14	P105-600×100		100	320	28.63		
15	P105-600×150		150	370	39.49		
16	P105-800×60	800	60	280	35.53	PG800	16.76
17	P105-800×100		100	320	36.73		
18	P105-800×150		150	370	49.49		



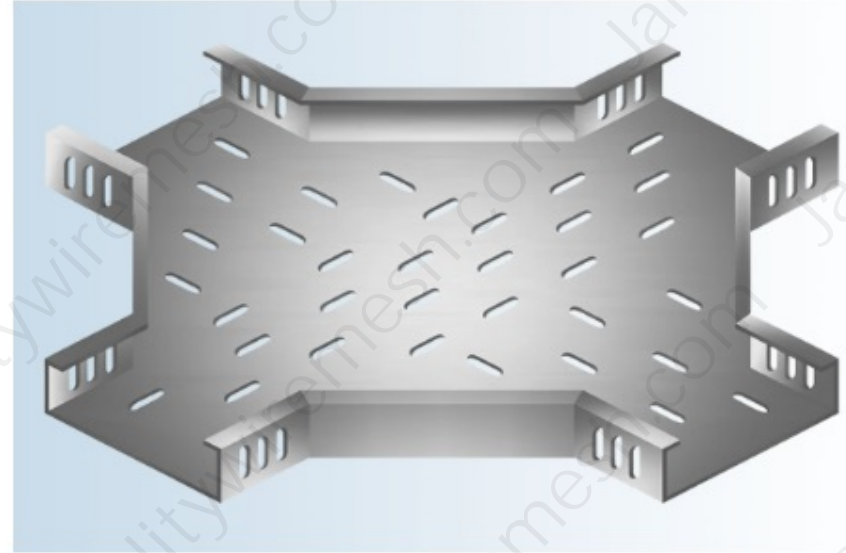
产品名称: 托盘式水平四通

产品类别: 托盘式电缆桥架

产品规格型号:

选型参数表

序号	型号	规格 mm			重量	配用盖板	
		b	h	L	kg/件	型号	重量 kg/件
1	P104-200×60	200	60	640	12.86	PG200	9.15
2	P104-200×100		100		17.55		
3	P104-200×150		150		27.72		
4	P104-300×60	300	60	740	20.24	PG300	13.57
5	P104-300×100		100		22.35		
6	P104-300×150		150		32.51		
7	P104-400×60	400	60	840	30.02	PG400	18.68
8	P104-400×100		100		34.41		
9	P104-400×150		150		50.46		
10	P104-500×60	500	60	940	39.17	PG500	23.57
11	P104-500×100		100		42.47		
12	P104-500×150		150		59.31		
13	P104-600×60	600	60	1040	47.21	PG600	40.29
14	P104-600×100		100		50.30		
15	P104-600×150		150		69.03		
16	P104-800×60	800	60	1240	65.95	PG800	56.01
17	P104-800×100		100		68.58		
18	P104-800×150		150		86.91		



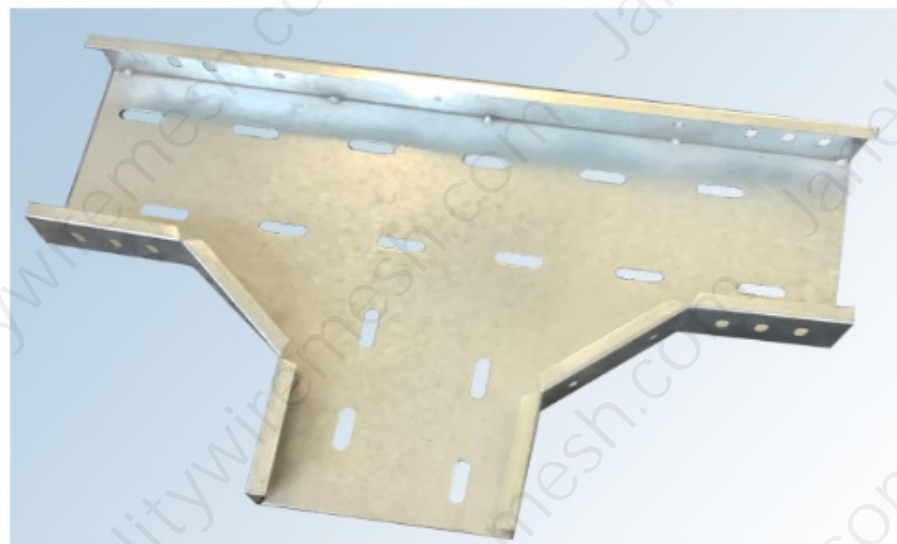
产品名称：托盘式水平三通

产品类别：托盘式电缆桥架

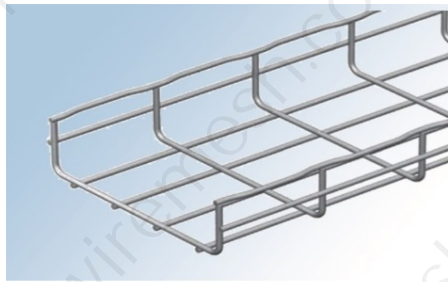
产品规格型号：

选型参数表

序号	型号	规格 mm				重量 kg/件	配用盖板	
		b	h	L <sub>1</sub>	L <sub>2</sub>		型号	重量 kg/件
1	P103-200×60	200	60	640	420	10.02	PG200	6.50
2	P103-200×100		100			14.10		
3	P103-200×150		150			21.24		
4	P103-300×60	300	60	740	520	16.40	PG300	8.59
5	P103-300×100		100			18.36		
6	P103-300×150		150			26.39		
7	P103-400×60	400	60	840	620	26.34	PG400	14.80
8	P103-400×100		100			29.21		
9	P103-400×150		150			41.75		
10	P103-500×60	500	60	940	720	33.18	PG500	18.20
11	P103-500×100		100			36.32		
12	P103-500×150		150			48.46		
13	P103-600×60	600	60	1040	820	40.47	PG600	25.50
14	P103-600×100		100			43.77		
15	P103-600×150		150			59.40		
16	P103-800×60	800	60	1240	1020	57.57	PG800	32.10
17	P103-800×100		100			60.86		
18	P103-800×150		150			70.29		







网格式直通电缆桥架比托盘直通和梯架直通更利于机房后期维护，不会导致桥架灰尘聚集时间长了容易滋生细菌。网格式直通电缆桥架的结构特征为网状托盘代号WT，品种代号为直线段，品种代号01A。网格式直通电缆桥架规格型号参数包括宽度、高度、长度和丝径。

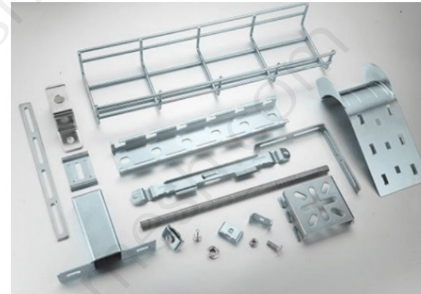
#### 1、网格式直通电缆桥架产品信息

产品编号：JY-WT101

产品名称：网格式直通桥架

产品类别：网格式电缆桥架

产品示意图如下（包括常用零配件）



#### 3、网格式直通电缆桥架的配件数量

配件1：侧连接（也叫快速直接条）



最大100\*50的网格用卡扣，大于100\*50的网格配侧连接。1节网格直通电缆桥架配1个侧连接，1个网格弯通电缆桥架配1个侧连接，1个网格三通电缆桥架配2个侧连接，1个网格四通电缆桥架配4个侧连接。

#### 2.1 网格式直通桥架规格型号的长度

网格式直通桥架一般每段长度为3米，支持按照要求进行长度定制。

#### 2.2 网格式直通桥架常见规格型号的宽度、高度和丝径

下面为网格式直通常见桥架规格型号：

规格1：50\*50 宽度50mm 高度50mm 丝径4.0mm

规格2：100\*50 宽度100mm 高度50mm 丝径5.0mm

规格3：100\*100 宽度100mm 高度100mm 丝径5.0mm

规格4：200\*50 宽度200mm 高度50mm 丝径5.0mm

规格5：200\*100 宽度200mm 高度100mm 丝径5.0mm

规格6：300\*100 宽度300mm 高度100mm 丝径5.0mm

规格7：300\*150 宽度300mm 高度150mm 丝径5.0mm

规格8：400\*100 宽度400mm 高度100mm 丝径5.0/5.5mm

规格9：400\*150 宽度400mm 高度150mm 丝径5.0/5.5mm

规格10：500\*100 宽度500mm 高度100mm 丝径5.0/5.5mm

#### 2.3 网格式直通桥架全部规格型号：

型号	规格	宽度(MM)	高度(MM)	长度(MM)	丝径(MM)
YQHF-WG-50	50*50	50	50	3000	4.0
YQHF-WG-100	100*50	100	50	3000	5.0
	100*100	100	100	3000	5.0
YQHF-WG-200	200*50	200	50	3000	5.0
	200*100	200	100	3000	5.0
YQHF-WG-300	300*100	300	100	3000	5.0
	300*150	300	150	3000	5.0
YQHF-WG-400	400*100	400	100	3000	5.0/5.5
	400*150	400	150	3000	5.0/5.5
YQHF-WG-500	500*100	500	100	3000	5.0/5.5

配件2：卡扣



#### 4、网格式直通电缆桥架的材质

网格式直通桥架按照材质分为电镀锌网格式直通桥架、热镀锌网格式直通桥架和不锈钢网格式直通桥架。电镀锌网格式直通桥架采用电镀锌工艺，电镀锌工艺利用电解溶液技术使锌离子附着到钢铁基材上，锌层厚度可以大于等于12um，热镀锌工艺是把锌金属溶液与钢铁基材进行化学反应，生产锌铁合金层来防腐蚀，锌层厚度一般大于等于65um。不锈钢网格式直通桥架制作材质可以选用201不锈钢或304不锈钢。