



HEBEI JIKE TRADE CO.,LTD

ZHONGKE INDUSTRIAL PRODUCTS CO.,LTD

ADD:BAONENG CENTER,SHIJIAZHUANG,HEBEI,CHINA 050800

TEL/WECHAT/WHATSAPP:+86-15831931141 +86-19930751141

Email: [janeliu@qualitywiremesh.com](mailto:janeliu@qualitywiremesh.com) Web: [www.qualitywiremesh.com](http://www.qualitywiremesh.com)

## Interior Wall Galvanized Expanded Rib Lath 600MM Width 2500MM Length





HEBEI JIKE TRADE CO.,LTD  
 ZHONGKE INDUSTRIAL PRODUCTS CO.,LTD  
 ADD:BAONENG CENTER,SHIJIAZHANG,HEBEI,CHINA 050800  
 TEL/WECHAT/WHATSAPP:+86-15831931141 +86-19930751141  
 Email: [janeliu@qualitywiremesh.com](mailto:janeliu@qualitywiremesh.com) Web: [www.qualitywiremesh.com](http://www.qualitywiremesh.com)

### Detailed Product Description

Place of Origin:	CHINA		
Brand Name:	JK		
Certification:	ISO9001-2008		
Model Number:	RIB LATH		
Minimum Order Quantity:	to be order		
Packaging Details:	6 pallet ,20pcs/bundle,50bundle/pallet		
	6 pallet,20pcs/bundle,30bundle/pallet		
	Total : 9600pcs/20' GP container		
Delivery Time:	7 work days		
Payment Terms:	L/C, T/T, Western Union		
Supply Ability:	10000 square meter per 16 days		
Material:	Galvanized Steel	Thickness:	0.2mm-0.6mm
Rib Distance:	75mm, 100mm, 150mm	Size:	600mmx3000mm
Small Order:	Support	Sample:	Support



HEBEI JIKE TRADE CO.,LTD  
ZHONGKE INDUSTRIAL PRODUCTS CO.,LTD  
ADD:BAONENG CENTER,SHIJIAZHUANG,HEBEI,CHINA 050800  
TEL/WECHAT/WHATSAPP:+86-15831931141 +86-19930751141  
Email: janeliu@qualitywiremesh.com Web: www.qualitywiremesh.com

## Specification of Interior Wall Galvanized Expanded Rib Lath

Thickness(mm)	Rib Distance(mm)	Weight(KG)	Width X length(mm)
0.30	100	1.79	600 x 2500
0.35	100	2.09	600 x 2500
0.40	100	2.38	600 x 2500
0.45	100	2.68	600 x 2500
0.5	100	2.98	600 x 2500
0.30	150	1.31	600 x 2500
0.40	150	1.75	600 x 2500
0.45	150	1.96	600 x 2500
0.5	150	2.17	600 x 2500

Note: Besides those above mentioned specification,the others can be made according to customer's requirements.



HEBEI JIKE TRADE CO.,LTD

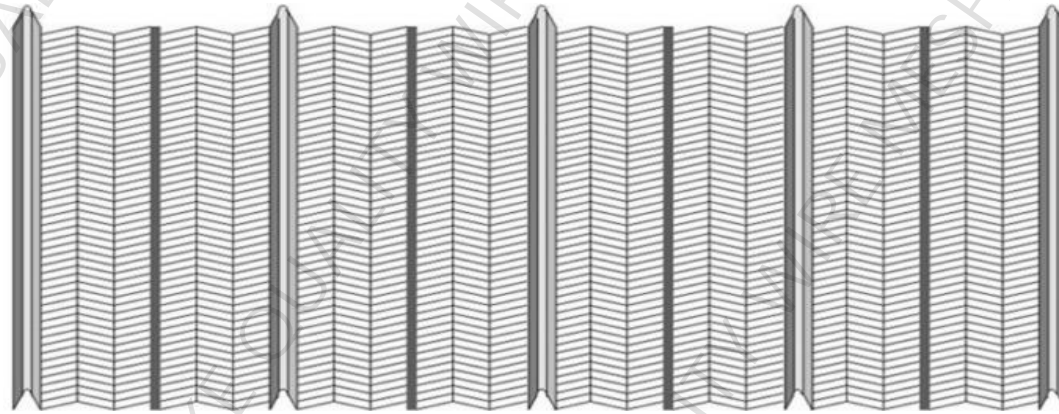
ZHONGKE INDUSTRIAL PRODUCTS CO.,LTD

ADD:BAONENG CENTER,SHIJIAZHUANG,HEBEI,CHINA 050800

TEL/WECHAT/WHATSAPP:+86-15831931141 +86-19930751141

Email: [janeliu@qualitywiremesh.com](mailto:janeliu@qualitywiremesh.com) Web: [www.qualitywiremesh.com](http://www.qualitywiremesh.com)

## Drawing Interior Wall Galvanized Expanded Rib Lath



## Advantages of Interior Wall Galvanized Expanded Rib Lath

There is a reinforced mesh (a type of free template network).

It is made of steel strips cut and stretched by professional machines.

Is a completely jointless expanded steel mesh,

Made of pre-galvanized strip or 304 stainless steel,

Due to its special mesh and its mesh surface, there is a uniform V-shaped rib structure.



HEBEI JIKE TRADE CO.,LTD


ZHONGKE INDUSTRIAL PRODUCTS CO.,LTD

ADD:BAONENG CENTER,SHIJIAZHUANG,HEBEI,CHINA 050800

TEL/WECHAT/WHATSAPP:+86-15831931141 +86-19930751141

Email: [janeliu@qualitywiremesh.com](mailto:janeliu@qualitywiremesh.com) Web: [www.qualitywiremesh.com](http://www.qualitywiremesh.com)

## Applications of interior wall galvanized expanded rib lath

project show of rib lath	application of rib lath
	<ol style="list-style-type: none"><li>1. High and low-rise residential light compartments, firewalls;</li><li>2. Construct a partition, a compartment;</li><li>3, the floor of the building, the partition wall;</li><li>4. Permanent interior and exterior walls and walls of permanent buildings;</li><li>5, the basement moisture-proof duplex wall.</li><li>6. Work seams with structural combination;</li><li>7. Tunnels, sewers, and wall works;</li><li>8, cutting foundation, dock, retaining wall;</li><li>9, flat and arched floor;</li><li>10. Nuclear power plant, storage tank and other arc-shaped structures;</li><li>11. Special projects such as landscaping sculptures;</li><li>12. Slope protection, earth embankment and other projects.</li></ol>

WIRE MESH  
QUALITY  
JIKE

HEBEI JIKE TRADE CO.,LTD

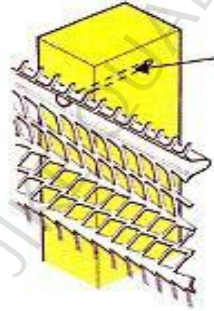
ZHONGKE INDUSTRIAL PRODUCTS CO.,LTD

ADD:BAONENG CENTER,SHIJIAZHUANG,HEBEI,CHINA 050800

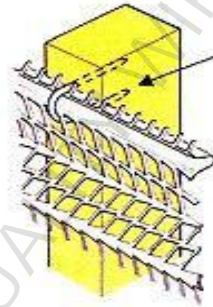
TEL/WECHAT/WHATSAPP:+86-15831931141 +86-19930751141

Email: janeliu@qualitywiremesh.com Web: www.qualitywiremesh.com

木材間柱 (間隔 600mm)  
Timber studs at 600mm centres

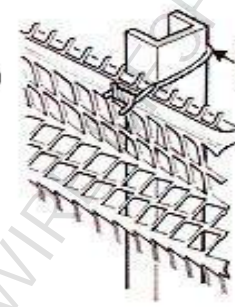


鍍鋅釘  
(Galvanized Nail)



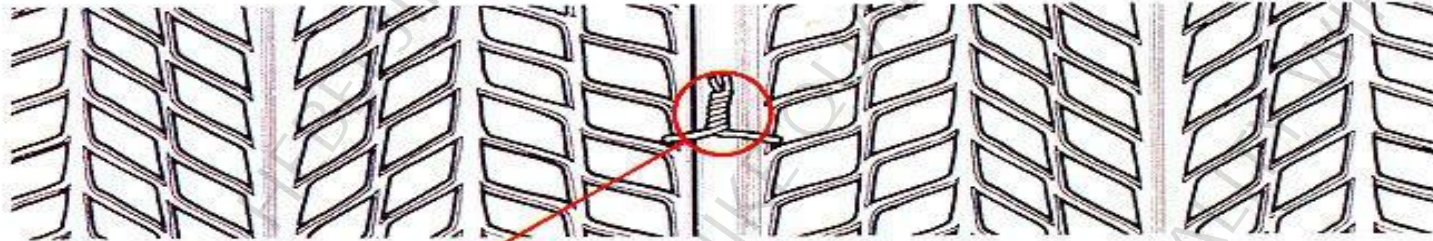
鍍鋅鉤釘  
(Galvanized Staple)

鋼材間柱 (間隔 600mm)  
Steel studs at 600mm centres



鍍鋅鐵線  
(Galvanized Wire tie)

有肋格網固定方法 (Ribbed Lath fixing method )



邊肋搭疊後每隔150mm以鐵線繫緊  
(side ribs nested and wired at 150mm intervals)

邊肋搭疊後情形 (The edge ribs to lapped state)



**WIRE MESH  
QUALITY  
JIKE**

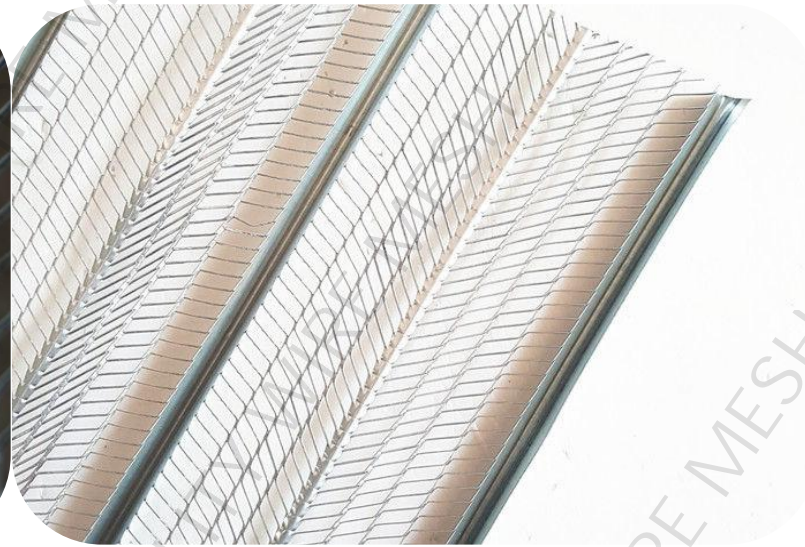
HEBEI JIKE TRADE CO.,LTD

ZHONGKE INDUSTRIAL PRODUCTS CO.,LTD

ADD:BAONENG CENTER,SHIJIAZHUANG,HEBEI,CHINA 050800

TEL/WECHAT/WHATSAPP:+86-15831931141 +86-19930751141

Email: [janeliu@qualitywiremesh.com](mailto:janeliu@qualitywiremesh.com) Web: [www.qualitywiremesh.com](http://www.qualitywiremesh.com)





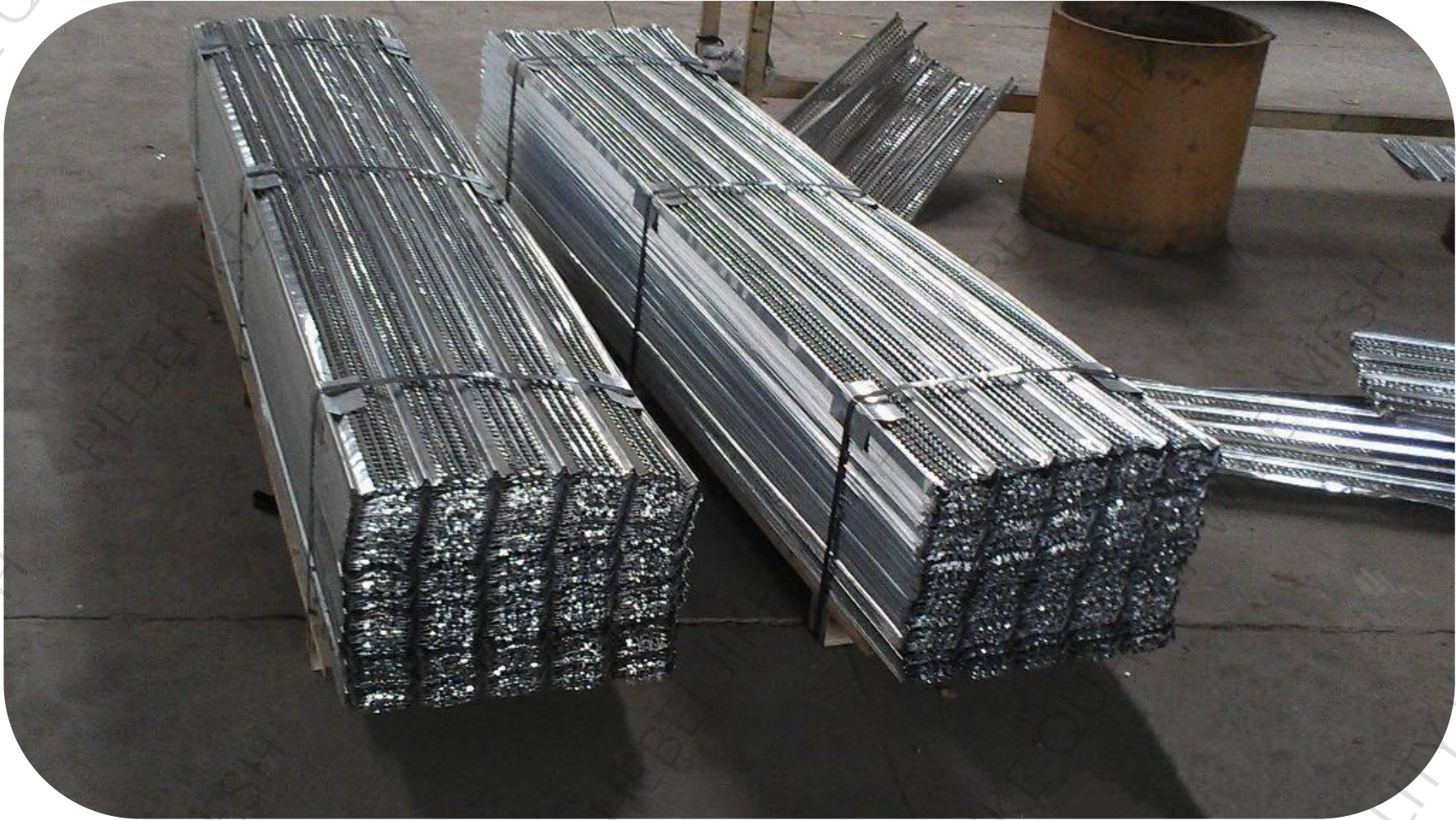
HEBEI JIKE TRADE CO.,LTD

ZHONGKE INDUSTRIAL PRODUCTS CO.,LTD

ADD:BAONENG CENTER,SHIJIAZHUANG,HEBEI,CHINA 050800

TEL/WECHAT/WHATSAPP:+86-15831931141 +86-19930751141

Email: [janeliu@qualitywiremesh.com](mailto:janeliu@qualitywiremesh.com) Web: [www.qualitywiremesh.com](http://www.qualitywiremesh.com)





## High Rib Lath

It is mostly used as concrete permanent dismantle free template for civil engineering such as tunnel, bridge, raft style foundation, sewer system, subways, retaining wall, nuclear power station, docks,ocean engineering and irregular or curved shapes.

Because its meshes and U patterns, it has better anti-stress capability and forming flexibility than normal metal lath.

This product has excellent engineering quality, construction security and widely used in tunnels bridges, valve basement systems, sewage systems, subways, retaining walls, nuclear power plants, shipyards,water pools and marine engineering works and high rise building projects and non-regular or bending pattern etc. as concrete permanent assembly-free formwork

High quality hy-rib					
Thickness (mm)	Weight (kg)	Width (mm)	Length (mm)	Rib Height (mm)	Rib Distance (mm)
0.21	1.70	450	2200	14-20	90
0.23	1.90	450	2200	14-20	90
0.30	2.48	450	2200	14-20	90
0.35	2.90	450	2200	14-20	90
0.40	3.30	450	2200	14-20	90
0.45	3.70	450	2200	14-20	90
0.50	4.10	450	2200	14-20	90

